

Clayworks



CLAY PLASTERS &
NATURAL FINISHES

“The simplest materials are
the most noble, because
they are honest.”

Nader Khalili

PROJECTS

RETAIL	P12
HOSPITALITY	P48
RESIDENTIAL	P86
PUBLIC	P136

FINISHES

RAMMED EARTH	P158
CLAY	P166
TADELAKT	P176
LIME	P180
CUSTOM FINISHES	P184

COLOUR	P198
SPECIFYING	P206

CLAY

Clay is a natural material formed over time by the slow weathering of rock. It is composed of fine mineral particles that, when mixed with water, become soft and malleable - able to be shaped, formed, and applied. As it dries, clay returns to a hardened state. It is one of the oldest known building materials, used for thousands of years in structures across every continent.

Beyond its history, clay is a material that works in harmony with the environments we build. It breathes. It responds to humidity. It retains heat and gently releases it. It regulates moisture, absorbs odours and pollutants, buffers

temperature, and softens acoustics. Entirely natural and non-toxic, it contains no cement, no synthetic additives, and trace VOCs. These qualities help create spaces that are not only healthier to inhabit, but more comfortable to live and work in.

Clay is not static, it is alive in a quiet, essential way.

WORKS

Clay brings together a unique set of natural properties that align closely with the priorities of contemporary architecture. Its visual character is equally compelling, offering a depth of tone and texture that shifts subtly in response to light, touch, and time. From smooth, silken surfaces to more rustic or expressive textures, clay brings warmth and authenticity to both traditional and modern buildings.

For architects and designers, clay can answer the need for sustainable, low-carbon materials, while also supporting a deeper sensory and emotional connection to space.

At Clayworks, we offer a core range of clay plasters and natural finishes to meet the needs of contemporary construction. Complementing this, our bespoke design service and sample studio collaborate closely with architects and designers worldwide to craft unique, custom finishes tailored to each client's vision. Amongst the most sustainable wall finishes available, our clay plasters are recyclable, repairable and compostable. All of our clay plasters have an Environmental Product Declaration, a Health Product Declaration, trace VOC Emissions reports and exemplary Fire Rating reports.



ROOTS

Clayworks was born from a love and belief in natural, sustainable building practice. It evolved from Adam Weismann and Katy Bryce's earlier company, Cob in Cornwall (2001–2010), where they specialised in restoring old buildings, building new ones, and travelling the world to learn about the traditions of clay as a building material. This deep understanding inspired Adam and Katy to share their knowledge through two influential books: *Building with Cob* (2006) and *Clay and Lime Finishes: Plasters, Renders and Paints* (2008), both of which continue to serve as key resources for those passionate about natural building.

This journey prompted Adam and Katy to establish Clayworks in 2010. From their workshop in Cornwall, Clayworks manufacture unique blends of natural clay plaster for the architectural and interior design industries.

The mission of Clayworks is to make a positive impact on the world. By creating products that are beautiful, high performance, natural and environmentally responsible, a positive impact can be made on design and construction.



PROJECTS

RETAIL	P12
HOSPITALITY	P48
RESIDENTIAL	P86
PUBLIC	P136



RETAIL

ON HQ

Global sportswear brand On partnered with M Moser Associates to create its new 25,000 sq ft London office. In a workspace designed to inspire and adapt, our Rammed Earth clay plaster sits seamlessly within the architectural language, offering both visual impact and a grounding presence that reflects On's ethos of innovation grounded in nature.

At its heart stands a sculptural staircase, finished in our hand-applied Rammed Earth clay plaster, a tactile centrepiece that connects the two levels and evokes a cocooning, cave-like feel.

Inspired by the geology of the River Thames Basin, our Rammed Earth finish was carefully layered by hand to create a gradient effect that subtly lightens as it ascends, echoing the natural stratification of earth.

Alongside our natural clay plaster, M Moser's sustainability team carefully selected other low-carbon materials like Marmoleum flooring—which absorbs more CO2 than it emits, ethically sourced timber and low-VOC fabrics, each selected based on life cycle analysis.

Architects
M Moser Associates

Finish
Interior Rammed Earth
Custom Colours

Location
London





*"The Clayworks rammed earth finish gave us freedom to match the visual intent while staying true to the raw qualities of rammed earth. It was the most sustainable choice without compromise."
Suzanne Ries, Sustainability Specialist, M Moser.*



ON RETAIL

For their Milan and London flagship stores, On's in-house design team chose Clayworks finishes as a way to introduce natural materials into spaces otherwise defined by precision and high-performance design. The tactile quality of our clay plasters offer a subtle contrast to the technical elements of each store, helping to create a balanced environment.

The use of our natural finishes also supports On's broader sustainability goals. Clayworks plasters are made from natural, non-toxic ingredients and are fully recyclable and compostable - qualities that align with On's efforts to reduce its environmental impact.



OMOROVICZA

At Omorovicza's flagship Mayfair spa, our Smooth clay plaster was chosen to reflect the mineral-rich products of the Hungarian skincare brand. The design evokes the textures and tones of the architecturally significant Rácz Thermal Bath in Budapest, which was built by ancestors of the brand's founder.

The space was designed to reflect Omorovicza's provenance and products. Our clay plaster's soft, natural finish complements the other materials in the space such as travertine, copper, and terracotta, contributing to a layered spatial language rooted in texture, tactility, and heritage.

Architects
Hyphen Design, Tina Vaia,
EJM Studio

Finish
Interior Smooth NUD-03

Location
London





"Where possible we've used natural materials in their raw state. The variation and layering of these elements somehow feel intuitive as it relates to skincare."

- EJM Studio



VEJA

VEJA's first UK store, designed by Deidra Hodgson, embodies the brand's minimalist style and unwavering commitment to sustainability.

Inside, 5,000 bespoke bricks made from waste limestone echo the Soho brick exterior, their unfired composition reducing carbon impact. Complementing this, our clay plasters, crafted from unfired clay, minerals, and natural pigments, grace the surrounding walls, bringing a subtle, tactile beauty that reflects VEJA's ethos of thoughtful design and environmental consciousness.

Architects
EBBA / Deidra Hodgson

Finish
Interior Smooth WHI-07

Location
London



MOUKI MOU

William Russell drew inspiration from the Mouki Mou boutique in Athens and the original London store to create 'the darker side of Mouki Mou' - a calming, moody interior that serves as a Yin to the light and airy Yang of the existing boutiques.

Our rustic plaster was chosen for its earthy tone, tactile finish, adding depth and texture, whilst complementing cork flooring, recycled wood fibre Valchromat joinery, and Portland stone accents.

Architects
William Russell

Finish
Interior Rustic BRO-01

Location
London



COS MEXICO CITY

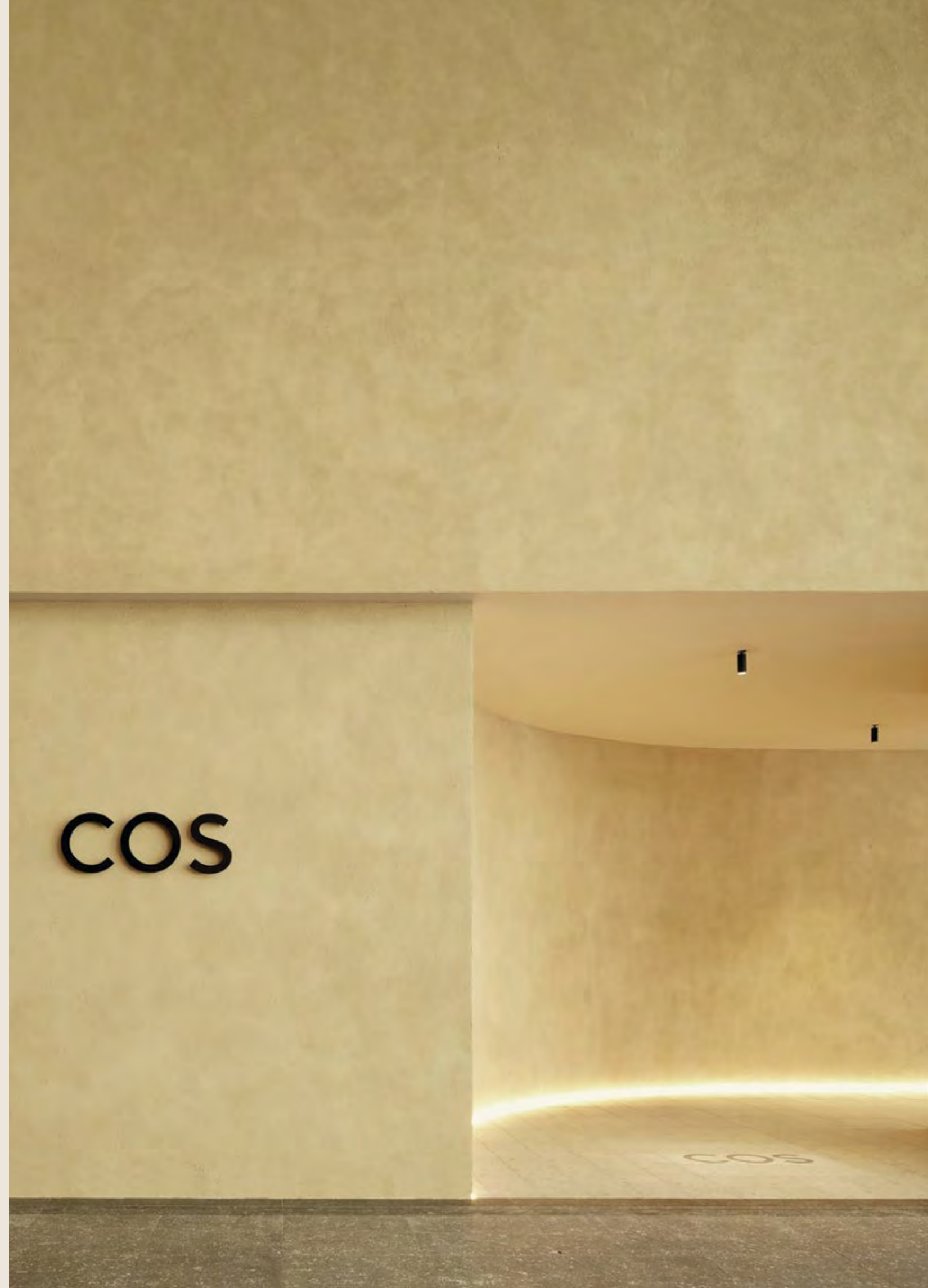
Designed in-house and supported by sustainability, interior, and built environment specialists, the COS Flagship store in Mexico combines the country's rich artisanal craft traditions with more sustainable design.

Our rustic interior and exterior finishes draw inspiration from Mexico's golden cornfields, adding depth, texture, and a strong sense of place.

Designers
In-house

Finish
Interior Rustic BRO-06
Exterior Rustic BRO-05

Location
Mexico



AESOP, DUKE OF YORK

Recalling both cave and cathedral, our collaboration with Danish innovators Snøhetta was the firm's first permanent project in England. The custom ombre effect of our coarse clay plaster, here a foil to streamlined stainless steel, is amplified by dramatic through-lit arches.

"The contrasts created by the rough surfaces of the walls against the soft, polished expression of the precise stainless-steel shapes, the play with color gradients, as well as the changes in light throughout the space all underline a sense of depth to the design."- Snøhetta

Designer
Snøhetta

Finish
Interior Ombre Texture
Custom Colours

Location
London



AESOP, WESTFIELD

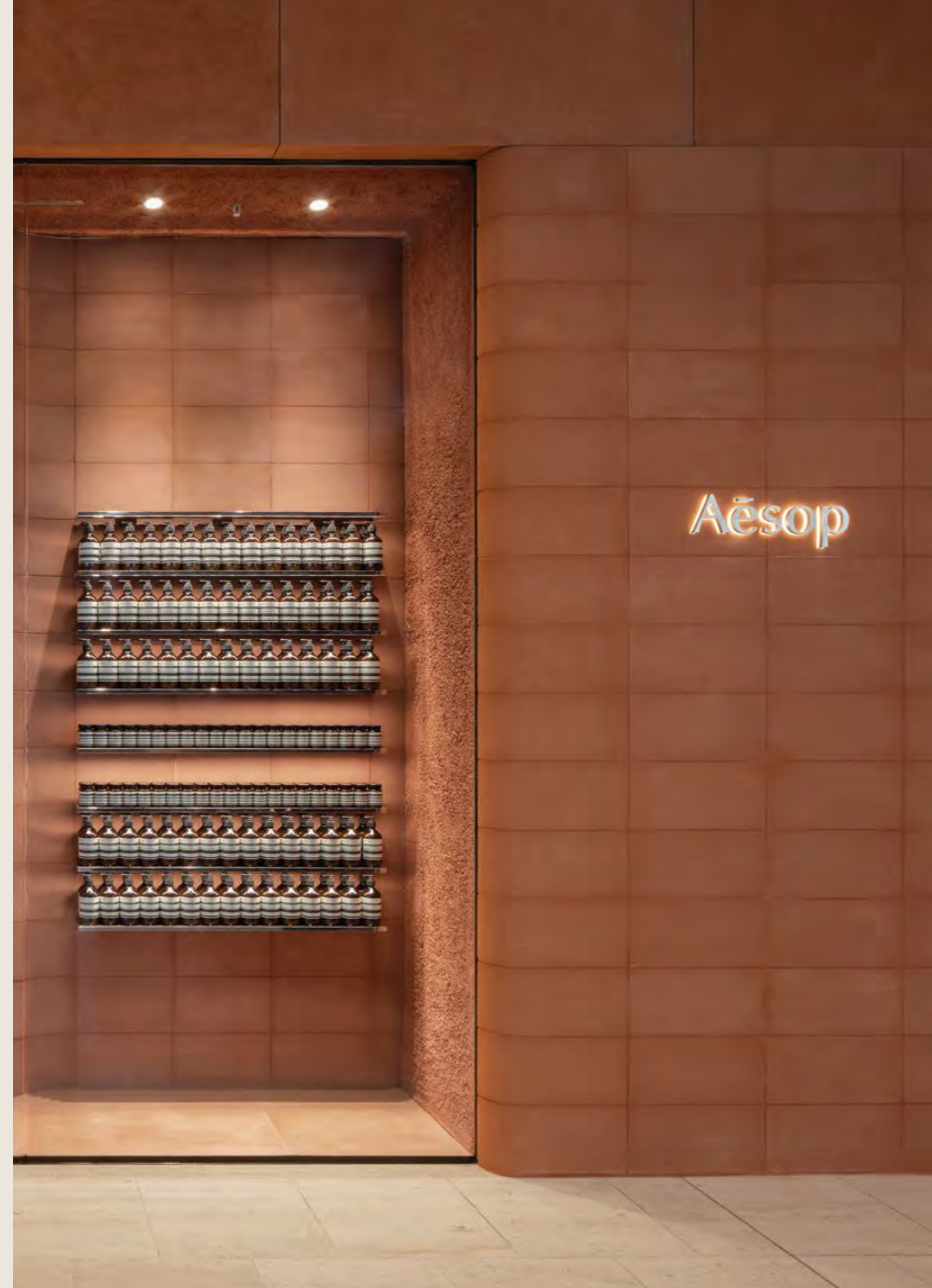
Designed by Al-Jawad Pike, Aesop Westfield is conceived as a tranquil retreat from the bustling mall environment.

The warm, earthy tones of the interior reflect the essence of traditional red brick-walled gardens. Clayworks' Rustic clay plaster envelops the upper walls and ceiling, providing a rich, textured finish that enhances the sense of calm and intimacy. This tactile surface contrasts beautifully with sleek aluminium display shelves and the angular cast resin sinks crafted by Sabine Marcelis, achieving a seamless harmony between rustic warmth and modern sophistication.

Designer
Al Jawad Pike

Finish
Coarse Rustic
Custom Colour

Location
London



PRINCESS

This Antwerp boutique was the proving ground for our Rough with the Smooth finish. A custom interior and exterior finish was developed at the request of Anversa, allowing the suggestion of weighty stone to extend seamlessly to the exterior. The result is a striking display of polished and textured surface design, applied at scale.

Architect
Anversa

Finish
Interior and Exterior Rough with the Smooth WHI-02

Location
Antwerp



ALLSAINTS

At Allsaints' Manchester store, designed by Al-Jawad Pike, a custom Clayworks Concrete effect finish reinforces the store's industrial design language. Drawing on references such as Sverre Fehn's Nordic Pavilion in Venice and the monumental steel sculptures of Richard Serra, the design employs a monochromatic palette, where our clay plaster sits alongside free-standing metal walls and inset niches to create a restrained yet expressive interior.

By contrast, the changing rooms, which are more intimate in scale, are lined in Douglas fir plywood and felt drapes, providing a softer tactile quality for customers.

Designer
Al-Jawad Pike

Finish
Concrete effect

Location
Manchester



STONE ISLAND

We found like-minded collaborators in OMA/AMO, who recognised a culture of material innovation at Stone Island. Our high-impact Rammed Earth walls embrace a sense of enriched materiality alongside burned cork and corrugated metal panels sandblasted by hand.

"The design concept applied to the new stores reflect Stone Island's approach to product design and experimentation on materiality. Off-the-shelf materials go through unique treatments to acquire different appearances and properties."
- OMA/AMO

Architect
OMA / AMO

Finish
Rammed Earth

Location
Munich



APL

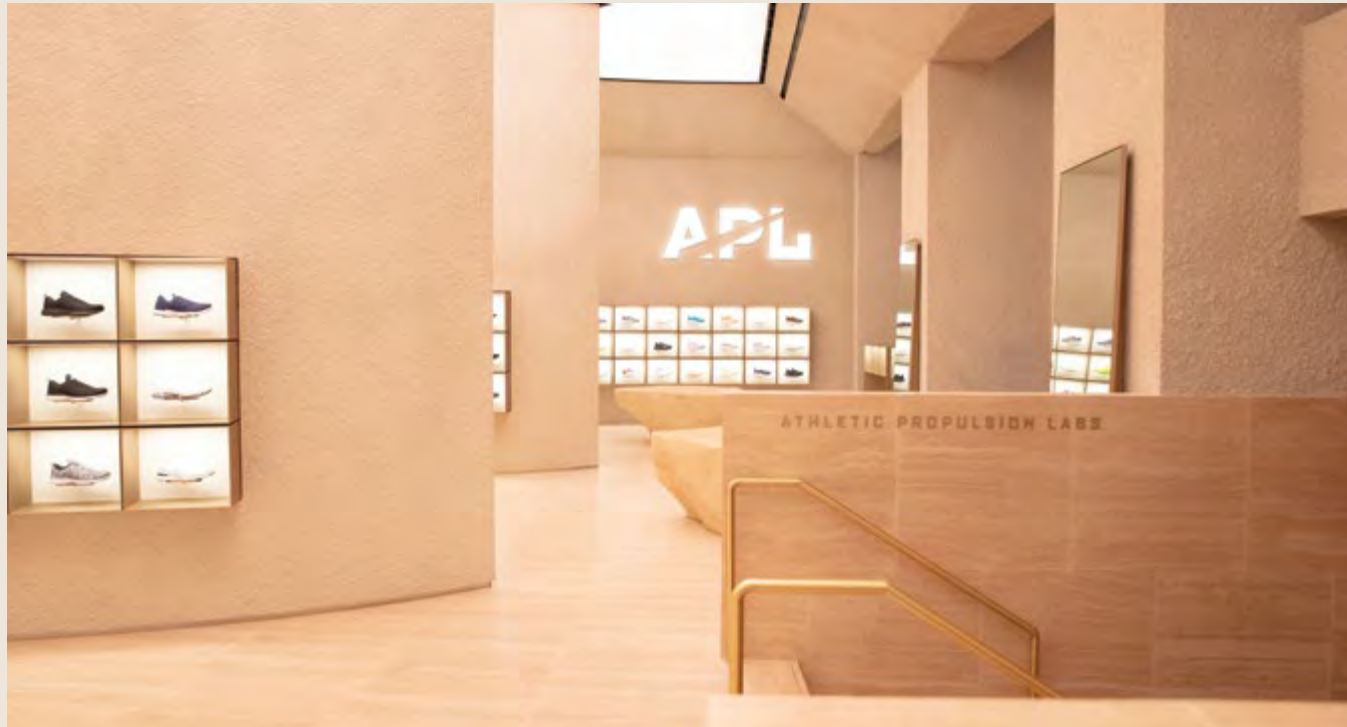
Working in close liaison with Al-Jawad Pike, we developed a custom clay shotcrete effect for the New York flagship of tech-forward athletic footwear brand APL. The textured finish, reminiscent of hand-worked stone, grounds sweeping curvilinear forms.

"The design approach establishes a curving amphitheatre-shaped space formed in seamless textured plaster walls to create a sculptural silhouette and a refined backdrop to the space." – Al-Jawad Pike

Architect
Al-Jawad Pike

Finish
Shotcrete effect
Custom colour

Location
New York



BLOOBLOOM

Nestled in the heart of London's vibrant Westfield centre, Bloobloom's luxury eyewear store offers a serene escape from the bustle outside. Designed by architect Corto Boutan, the space is defined by its elegant minimalism and curved form, all finished in our smooth clay plaster. The warm linen-toned finish softens the minimalist precision of the eyewear on display, bringing a quiet depth and understated refinement to the interior.

Architect
Corto Boutan Architecture

Finish
Smooth WHI-07

Location
London



SELF PORTRAIT

In the heart of Chelsea, a combination of our smooth and custom corrugated mint green clay plaster forms the textural foundation of contemporary luxury brand Self-Portrait's King's Road flagship. Designed by Andreas Kostopoulos in collaboration with brand founder Han Chong, the store explores the concept of self-reflection through strategically placed mirrors, concealed lighting and stainless steel. Custom terrazzo flooring in hues of white, grey and mint blankets the majority of the floors while some areas, including fitting rooms, were decorated with plush carpets in matching colours to add a softer touch to the space, where luxury meets retrofuturism.

Designer
Andreas Kostopoulos

Finish
Smooth and Slim
Corrugated GRE-04

Location
London



Photography: Paul Riddle



FELLOW

An allusion to the California landscape in clay plaster. Our Rammed Earth finished was chosen for this coffee retail shop in Los Angeles to evoke the colour and composition of local geology.

Architect
Studio Mai

Finish
Rammed Earth

Location
Los Angeles





HOSPITALITY

NUJUMA, RITZ CARLTON RESERVE

Designed by Foster and Partners, Nujuma's sweeping shell-inspired architecture and elegant interiors are crafted with natural materials such as stone, carved timber, burnished metalwork and clay. Geometric patterns drawn from regional design motifs create a strong sense of place.

Our natural clay plaster, Tadelakt and Exterior finish were specified in several key spaces to complement the architects' vision of low-impact construction, and design that harmonises with the environment.

Architects

Foster + Partners
AvroKo and Wimberley
Design

Finish

Smooth, Demi, Ombre
Tadelakt and Exterior

Location

Saudi Arabia



Photography: John Stephens and Marriott International



DESERT ROCK

Desert Rock, recognised by AD Middle East as one of the world's top hotels for 2025, is a striking fusion of architecture and landscape, carved directly into the ancient granite formations of Saudi Arabia's Hejaz Mountains. Nestled within a five-million-year-old valley, the resort is designed to harmonise with its environment, visually receding into the terrain to honour the site's natural beauty.

The interiors embrace a philosophy of "minerality and authenticity," with material choices that support a luxurious experience, rooted in the earth. Our natural finishes were specified in two key areas: the Basalt dining room, and the spa.

Designer
Studio Paulo Ferrari

Finish
Demi Rustic Custom Colour

Location
Saudi Arabia



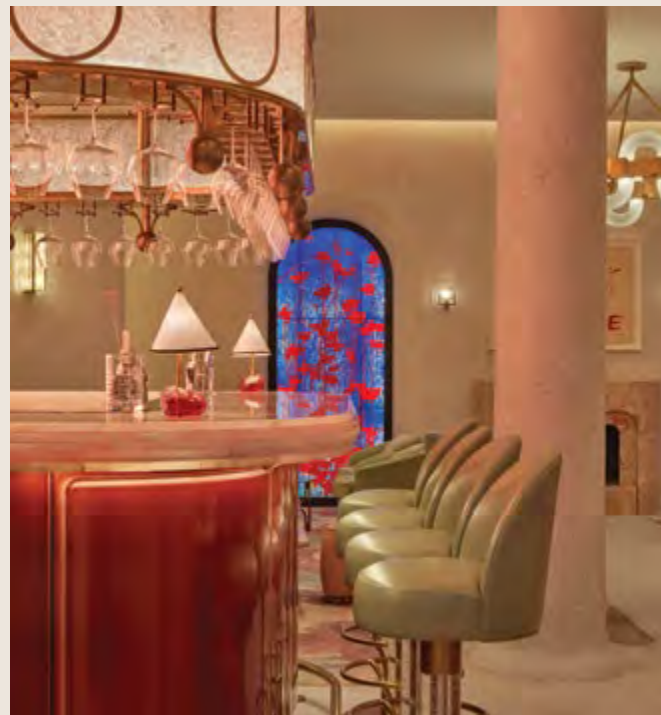
CONNAUGHT HOTEL

The Red Room at The Connaught, designed by Bryan O'Sullivan Studio, seamlessly blends sophistication with eclectic charm, inspired by the client's extensive art collection, including a previously unseen piece by Louise Bourgeois. Accents of red unify the space, creating an inviting atmosphere that feels like an art collector's living room. An arched doorway leads to the snug, where our bespoke ombré red clay plaster curves elegantly across the walls and domed ceiling, where a shimmering vintage chandelier punctuates the space.

Designer
Bryan O'Sullivan Studio

Finish
Smooth WHI-08
Ombre Texture Custom
Colours

Location
London



Photography: James McDonald



BUCKLE STREET STUDIOS

Designed end-to-end by Grzywinski + Pons, the rationalist exterior of this East London aparthotel gives way to a series of playful common spaces and studios. Used throughout, our Smooth clay plaster grounds soaring ceilings and lends warmth and intimacy to bedrooms.

“The palette: blush tinted clay, sage, timber, jute, creamy stone and velvety neutrals, further contributes to the plush serenity of the studios.” – Matthew Grzywinski, co-founder of Grzywinski + Pons

Architects
Grzywinski + Pons

Finish
Smooth NUD-02
Smooth TER-07

Location
London



THE STRATFORD BRASSERIE

Tasked with embedding their signature brand of soft-edged minimalism in this Stratford landmark, Danish studio Space Copenhagen paired a restrained palette with refined materiality. Our Smooth clay plaster, selected in a custom light grey, serves as a textural counterpoint to the polished concrete floor of the ground-floor brasserie.

Architects
Space Copenhagen

Finish
Custom Smooth

Location
London



OMA

The design for OMA by Box 9 Design draws on the understated elegance of the Greek islands, combining soft olive and eucalyptus tones with smoked oak and deep, dark bronze metalwork to create a calm, grounded palette.

Materiality played a central role in the design process. After testing a range of finishes that could evoke the texture and tone of the island landscape, our clay plaster was selected for its natural aesthetic and versatility. The use of a smooth finish was applied throughout to create depth, while maintaining a cohesive, mineral quality.

Designer
Box 9 Design

Finish
Interior Smooth
OLI-02 and Custom Colours

Location
London



CASINO MINE RANCH VINEYARD

Saturated desert shades blend the boundaries of inside and out at this vineyard in the Sierra foothills. The pavilion-style tasting room is flanked by monumental partitions in a custom Rammed Earth finish, creating a visual narrative that encourages immersion in the setting. Punctuated by clerestory windows, the deep walls give the suggestion of solid matter.

Designer
Don Jacobs Architect

Finish
Rammed Earth

Location
California



WATCH HOUSE

We worked with designer Deidra Hodgson in the selection of our durable lime-based Tadelakt for the Marylebone outpost of this specialty roastery and coffee shop. Its smooth and even character ensures visual uniformity across walls and a central bar, while seamless recessed shelves spotlight tonal packaging.

Architects
Deidra Hodgson

Finish
Tadelakt YEL-08

Location
London



HOOF CAFÉ

A horse's stable was the unlikely inspiration for this unique coffee shop. Our Demi Rustic clay plaster was selected for its rough-hewn appeal, while a custom Arakabe finish integrates straw into walls in a wink to the wider concept.

"It's a brutalist reinterpretation of countryside equine architecture. [A horse stall's] minimal design and proportions suffice to provide the horse with bare necessities – no more, no less". – Bone.Studio

Architects
Bone.Studio

Finish
Arakabe, Demi Rustic
WHI-08, Custom Colour

Location
UAE



TOPLUM

Toplum restaurant, by Studio Baab, celebrates craftsmanship through its use of natural materials, clean lines, and rhythmic patterns that offer a geometric simplicity. A restrained, neutral palette grounds the design, while thoughtful detailing creates intimacy within a generous floor plan.

Clayworks Demi-Rustic clay plaster was used throughout. Recessed strip lighting, designed in collaboration with Beirut-based Fabraca Studios, highlights the clay's texture whilst enriching the overall ambience of the space.

Designers

Studio Baab

Finish

Demi Rustic WHI-01

Location

Riyadh



MANTECA

Manteca is an Italian-British restaurant located in the heart of Shoreditch. At the restaurant's core is a commitment to sustainability, craft and carefully cultivated produce.

Both the colour palette and the cooking are centred around the pasta made on-site and the buttery warmth of the rich sauces that accompany it. A highly technical, sharply modern stainless-steel kitchen is enveloped in burnt, buttery brown Clayworks clay plaster walls, pasta-coloured booths, rich tan tones and oak cladding that echo the colours of the fluffy focaccia made and baked on-site.

Designers
Box 9 Design

Finish
Demi-Rustic TER-07

Location
London



Photography: Mariell Lind Hansen



BARAKA

Fluted grey plaster lends depth and dynamism to an eclectic interior that blends stark architectural elements with Mediterranean verve. The organic, imprecise lines of the hand-applied plaster contrast with graphic bar lighting.

"We saw a unique opportunity where we could pay homage to the Anatolian heritage but also bring the base architecture into the interiors."- Taner's Sons

Architect
Taner's Sons Design Studio

Finish
Fluted GRE-06

Location
London



Photography: Matt Austin



FIREPLACE

Fireplace by Bedrock is a bold new restaurant located in Holland Village, one of Singapore's most vibrant dining districts.

Developed to reflect the rich red-brown hues of Argentina's Quebracho tree, traditionally used in Asado charcoal grilling, our custom rammed earth finish brings a tactile and grounded quality to the space. Its layered tones and texture complement the multi-sensory atmosphere shaped by the open wood-fire kitchen, fine metal mesh curtains, and a handcrafted leather artwork by Balinese craftsmen, commissioned specifically for the restaurant.

Architect
Hot Design Folks

Finish
Rammed Earth

Location
Singapore



BAYN COFFEE

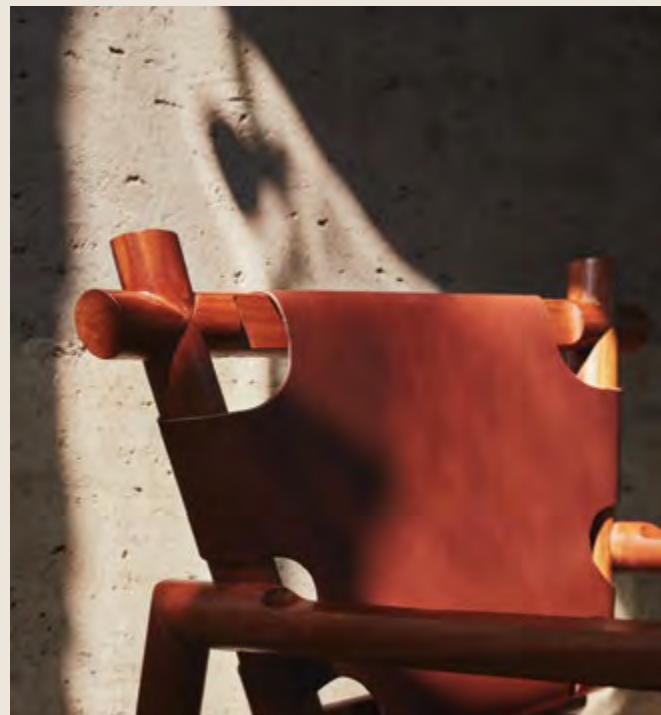
Demi-Rustic plaster in a rich earthen brown is a matte backdrop to a showpiece bronze bar in this pavilion-like coffee shop. 'Bayn' translates as 'in between' in Arabic, here a nod to the visual tension between history and modernity, desert and oasis, indoor and out.

"The eye is imminently drawn towards the clay plastered wall, the main backdrop to the bronze patina coffee bar".
Styled Habitat

Architect
Styled Habitat

Finish
Demi Rustic
Custom BRO-01

Location
Abu Dhabi



VILLA 515

Designed by NON, Villa 515 restores and transforms a 1980s Jumeirah villa, home to a perfumery, café, and a newly added restaurant.

At the heart of the space is a spiral staircase, inspired by the swirling smoke of bukhoor. Finished in our smoothed Demi Rustic, its sculptural form echoes the traditional architecture of UAE forts.

Throughout the restaurant, our smooth white clay plaster sets a calming tone, complementing bespoke tiles that add layers of texture and visual interest to the dining experience.

Architect
NON Design Studio

Finish
Smooth, Demi-Rustic
WHI-03, YEL-01

Location
Dubai



STICKS-N-SUSHI

Much like the food it serves, this Westfield restaurant is a smart fusion of Japanese and Danish design sensibilities. Smooth clay plaster in a sandy terracotta shade is framed by wood panelling, producing a cohesive interior with subtle textural interest.

"The first floor is characterised by warm clay coloured tones, generous curves, and a focus on natural materials such as wood, stone, linen and leather. The pace here is slower, the tones richer." – Emily Broom

Architect
Studio Emily Broom

Finish
Smooth TER-07

Location
London



MONDRIAN HOTEL

Our tonal clay plaster was used throughout several key spaces of the Mondrian Hotel, Shoreditch, as part of Goddard Littlefair's thoughtfully crafted interior design scheme.

Christina's, the hotel's double-height cafe bar, combines an industrial architectural form with softer details. A curved copper bar is crowned with a large-scale, hand-painted mural by Fred Coppin, while our clay plaster creates a softly textured backdrop to the space's decor.

Architect
Goddard Littlefair

Finish
Smooth, Tonal GRE-03,
GRY-07, TER-08

Location
London



THE PENNY BUN

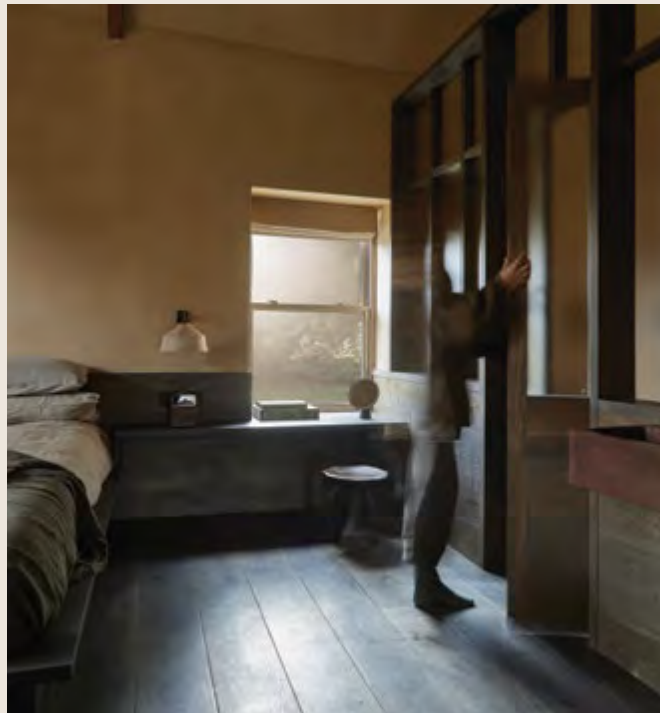
The Penny Bun, has been sensitively refurbished into a modern, intentional escape rooted in heritage. The refurbishment, led by designers Box 9 in collaboration with the Denton Reserve, was guided by a clear philosophy – that every design choice should leave a positive environmental impact.

A natural material palette of earthy browns, muted greens and wheat tones grounds the interiors in the natural beauty of the surrounding Yorkshire landscape. Our clay plaster was chosen as a key material throughout, ensuring a seamless flow from the communal inn to the crafted guest bedrooms.

Architect
Box 9 Design

Finish
Smooth BRO-06, BRO-01,
OLI-02 and OLI-04

Location
Yorkshire





RESIDENTIAL

TERZETTO

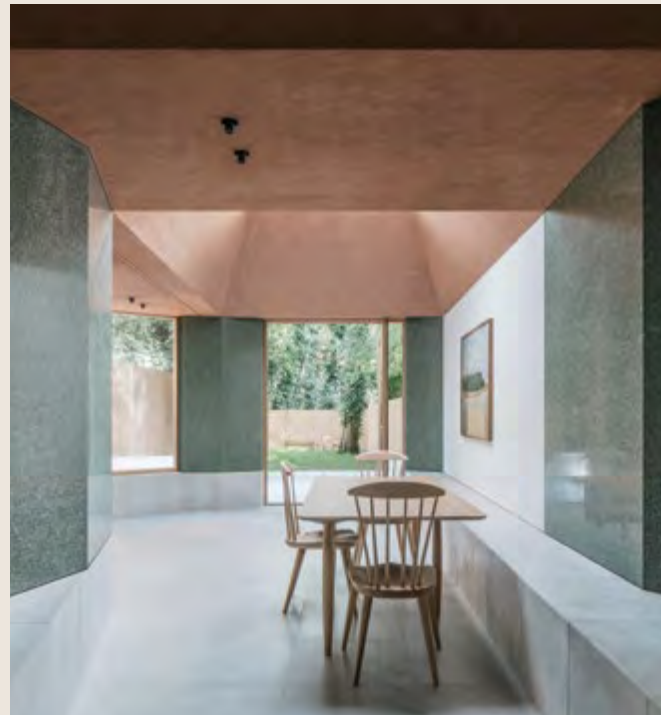
ConForm Architects chose a rosy shade in three clay textures to offset one-dimensional terrazzo and concrete in this West Hampstead garden flat. Selected for the substantial roof plane, the clay plaster finish facilitates crisp linear detailing. Our exterior finish was also used on this project.

AJ Retrofit and Reuse Awards 2025 - Best UK Project Under £800,000 - Winner

Architects
ConForm Architects

Finish
Interior Smooth TER-03
Interior Rustic TER-03
Exterior Rustic TER-03

Location
London



100 ACRE WOOD

The architects Denizen Works sought to make 100 Acre Wood appear hewn from rock, drawing inspiration from Basque sculptor Eduardo Chillida. The massing evokes the castle ruins prevalent across Scotland, while the house, nestled into a hollow in the landscape, appears to emerge naturally from the ground. This design gives the home a protective quality, responding to the exposed site and harsh weather conditions.

The space is softened with Demi Rustic finish in a warm, earth-like tone, infused with golden mica specks that create a subtle shimmer reminiscent of natural rock formations.

Designer
Denizen Works

Finish
Demi Rustic with Mica
Custom Colour

Location
Scotland



CASA MALLORCA

Casa Mallorca, designed by Rob Diaz, is a balanced fusion of natural materials and contemporary design. The exterior balances clean lines with organic textures, while the interior features open-plan living spaces enriched by our Clayworks plaster finish, bespoke wood cabinetry, and expansive glass walls that welcome natural light. Thoughtfully selected sustainable materials and energy-efficient systems underscore a commitment to environmentally conscious design without compromising on beauty.

Designer
Studio Rob Diaz

Finish
Interior Smooth WHI-08

Location
California



HOUSE OF GREY

We found kinship with Louisa Grey in a shared pursuit of human and ecological health in design. Breathable and toxin-free, our natural clay plaster hugs the contours of a Puglia-inspired kitchen on the lower ground floor of her Finsbury Park townhouse.

“Non-toxic, natural resources harvested directly from the earth ground us in nature for a calmer environment, improving concentration and providing stress reduction.” – Louisa Grey, founder of House of Grey

Designer
House of Grey

Finish
Interior Smooth WHI-05

Location
London



THE MAKERS BARN

Hutch Design unlocked the potential in a series of abandoned pig sheds with expansive glazing and a toolkit of natural materials applied with generosity. We produced a wonderfully textural rustic plaster for both inside and out in homage to vernacular wattle and daub.

"Internally we placed an emphasis on crafted, organic materials with earthy tones borrowed from nature – including clay-plastered walls and ceiling, end grain flooring and English elm joinery." – Hutch Design

Architects
Hutch Design

Finish
Interior Rustic, Exterior Rustic
Custom White

Location
England



WALMER YARD

We worked in close liaison with Peter Salter to produce a selection of custom clay finishes for this remarkable residential scheme, his first in the UK. Each yurt-like geometric dining room is clad in our charcoal-toned Arakabe plaster, a Japanese technique that incorporates chopped fibres into the raw clay.

"[The houses are] a culmination or meeting of the raw and the finished." - Peter Salter

Architects

Peter Salter and Fenella Collingridge

Finish

Arakabe BLA-01

Location

London



EARTHRISE STUDIO

Located in a historic 1924 shoe factory, Earthrise Studio, designed by Studio McW, reimagines the industrial space with natural materials that enhance both functionality and aesthetics. The design preserves original features like large steel windows and exposed concrete beams while introducing a bright, flexible interior.

Prioritising sustainability, the redesign utilises Clayworks clay plasters to create textured, matte walls that absorb toxins and promote a healthier living environment. The interplay of light with these natural finishes adds warmth, while materials like oak and reclaimed timber soften the industrial elements.

Architects
Studio McW

Finish
Smooth WHI-03

Location
London



BEL-AIR HOME

This Mediterranean-inspired Bel Air oasis, designed by architect Robert Sinclair and designer Errol de Jager, is a timeless masterpiece. Inspired by the homeowners' stay in Ravello, Italy, elements like a vaulted outdoor passageway lit by lanterns blend old-world charm with modern touches. Textured limestone, smooth travertine, and clay-plaster walls create warmth and elegance, complemented by steel windows and sculptural furnishings.

Designer
Errol Dejager

Finish
Smooth WHI-08
Smooth PIN-05
Textured Ombre WHI-08

Location
California



WAVE RESIDENCE

An Edwardian maisonette, designed for a young couple seeking a more peaceful city lifestyle, was reconfigured to optimize the space and create a seamless connection with the rear garden cloister. Sustainability was a central theme, with features such as wall heating and clay plaster incorporated to add warmth, texture, and tranquility to the interior while reducing energy consumption.

'I am most drawn to timber and earth. These are elements that reminds me of nature, I believe they give us an instant calming feeling. I believe this is the antidote to stressful city life, they remind us where we come from and keep us grounded.'

Designer
Fourteen A.M

Finish
Demi-Rustic WHI-08
Tadelakt Custom Colour

Location
London



BROADFIELDS

This retrofit, renovation, and extension of a semi-detached property in North London blends Art Deco with an Ibiza beach house aesthetic, all while prioritizing sustainability. Energy-efficient technology is seamlessly integrated behind a soft interior palette of natural materials.

Designer
Delve Architects

Finish
Smooth WHI-05

Location
London



CHALK RIVER HOUSE

Chalk River House is designed to connect seamlessly with nature, opening toward the River Test and organised around two internal courtyard gardens—a walled kitchen garden and a lush fern garden. A simple, cohesive palette of timber, zinc, stone, and Clayworks finishes is used throughout. Constructed entirely from a timber-panel frame, the building was erected within just a few weeks.

Architects
Oliver Leech Architects

Finish
Smooth WHI-04

Location
London



ARDOCH STEADING

Overlooking the River Dee, this hillside farmstead has been restored, reinstated, and reinvented following a decade-long project of careful reconstruction that supports Scottish craftsmanship and local tradespeople.

Using a combination of traditional and contemporary methods, Moxon Architects meticulously rebuilt the partially collapsed walls and roof of this 19th-century cattle shed, inserting frameless glass into the original apertures to preserve the building's vernacular character. The interior, fully insulated and finished with Clayworks plaster, follows the existing volumes as a template for the new living spaces.

Architect
Moxon Architects

Finish
Smooth WHI-02

Location
Aberdeen



TAPER HOUSE

A radical restructure of an archetypal Victorian townhouse, centred on a geometric rear extension. Beautifully silky clay plaster in a versatile oatmeal shade provides a point of consistency amidst interlocking angular forms.

"The clients wanted their home to be a sanctuary – a calming space for escaping city life with nods towards Mediterranean, So-Cal and new Mexican styles"- All & Nxthing

Architect
All & Nxthing and Merrett
Houmøller Architects

Finish
Smooth WHI-08

Location
London



Photography: Helen Leech



THE CLOUD HOUSE

The Cloud House, designed by Takeru Shimazaki Architects, features a refined use of Clayworks Classic Smooth plaster in two custom shades. These subtle tones draw on natural light and organic textures to create an ethereal, airy atmosphere. The smooth, tactile finish complements the clean lines of the architecture, adding natural warmth and balance to the serene interior.

Architect
Takeru Shimazaki Architects

Finish
Smooth WHI-02, WHI-07

Location
London



Photography: Taran Wilkhu

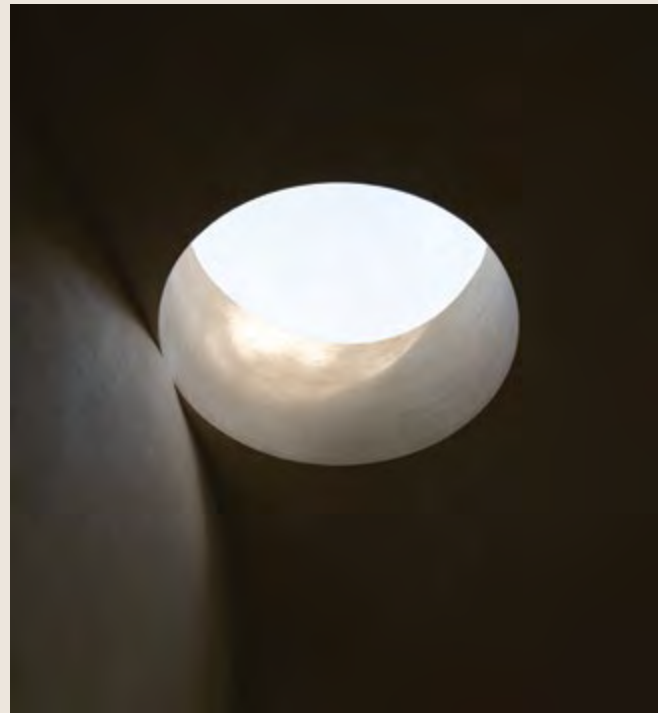
STUDIO FOR A COMPOSER

With Mary Duggan Architects, we focused on creating a wall finish that nurtures artistic expression and integrity. Our Tonal Demi Rustic finish enriches the studio with natural texture and serenity. This project reimagines creative spaces, ensuring every detail supports the composer's connection to their craft.

Architect
Mary Duggan Architects

Finish
Tonal Demi Rustic WHI-03

Location
UK



FULTON AVENUE

Designed by Rob Diaz Design, this light-filled family home in the San Fernando Valley celebrates the beauty and functionality of natural materials. Marble, quartz, oak and clay create a serene, modern and practical home.

Clayworks smooth finish clay plasters are used throughout the home, punctuated by feature walls of our corrugated finish, adding depth and texture that shifts with the light throughout the day.

Designer
Rob Diaz Design

Finish
Smooth WHI-06
Corrugated WHI-06

Location
California



DULWICH HOUSE

This modern, accessible home in Dulwich, designed by Covet Noir in collaboration with Takero Shimazaki Architects, blends functionality with a warm, Japanese-inspired aesthetic. Centered around three internal courtyards, the design maximizes natural light while maintaining open, easily navigable spaces. A palette of glass, stone, timber, and our Clayworks Clay plaster—complemented by organic materials and soft, natural tones—enhances the home's connection to the outdoors.

Architects
Takero Shimazaki Architects
Covet Noir

Finish
Smooth WHI-06

Location
London



CAPABILITY HOUSE

Capability House, designed by London-based studio Dedraft, is a contemporary 450 sq m residence situated within the historic Aynhoe Park Estate. The design harmoniously blends modern architecture with the estate's heritage, featuring a structure that appears to emerge from the earth, with a ground level anchored in Cotswolds stone, an upper body clad in black-stained Thermopine, and our Clayworks clay plaster featured throughout its interior.

Architects
Dedraft

Finish
Smooth WHI-04

Location
Oxford



WALTHAMSTOW HOUSE

Rees Architects restored this home in Waltham Forest, preserving its character and integrity through the use of natural, breathable materials. Thoughtful detailing, including our fluted finish applied both inside and out, creates an appealing blend of modern design, material functionality and historical sensitivity.

Architects
Rees Architects

Finish
Corrugated WHI-03

Location
London



MARY ELLEN

Keen to imbue a new-build home with authentic character, our collaborators Diaz + Alexander Studio rendered its walls in tactile clay plaster. A custom Corrugated wall with slimline ridges is blended into the smooth clay for a moment of enhanced materiality.

"While this is a new build, it has an old charm to it. Our palette was a blend of Southern California warmth with a big splash of European influence." – Rob Diaz, principal at Diaz + Alexander Studio

Designers
Diaz + Alexander Studio

Finish
Corrugated WHI-08
Smooth WHI-08

Location
USA



SOL DE ARCILLA

Sol de Arcilla (Clay Sun) is a two-bedroom apartment refurbishment in Hackney, London, designed by Studio Merlin as a warm, calming yet playful home that draws inspiration from its urban setting. The concept was to reflect the character of the yellow London stock and red brick buildings visible from the flat's kitchen window, reinterpreting these tones through our natural, pigmented clay plaster finishes.

The design sought to make the most of the 52sqm space by reworking the kitchen, integrating storage and creating a focal point at the heart of the flat - a clay sun.

Designers
Studio Merlin

Finish
Smooth YEL-06, OLI-03,
OLI-04, GRE-01, TUR-01,
TER-03, TER-08, PIN-08

Location
London



Photography: Richard Chivers



ROXWELL ROAD

Gestalt Developments transformed this London flat with a focus on health, wellbeing and sustainability, using Clayworks' natural clay and Tadelakt plasters for their breathable, non-toxic qualities and textured aesthetic. Tadelakt brings durability to wet areas while complementing softer clay surfaces, and a custom Rough with Smooth finish creates a focal point in the bedroom before continuing into the courtyard garden, connecting inside and out.

Designers
Gestalt Developments

Finish
Interior, Exterior Rough with the smooth Custom Colours
Smooth WHI-08, OLI-02
Tadelakt NUD-01, NUD-02

Location
London



DOME HOUSE

Dome House is a bold transformation of a Victorian home in London, blending historical charm with modern minimalism. The design centres on creating a calm, meditative space filled with light, openness, and a strong connection to nature, while preserving the home's original character.

Curved forms, finished with our smooth clay plaster, define the new extension, linking the kitchen to a living space crowned by a central dome, where garden and sky converge within a sensorial cocoon. The asymmetric skylight floods the domed space with natural light and enhances its serene, acoustic environment.

Designers
Roberto Di Donato

Finish
Smooth WHI-03

Location
London



TWO FAMILY HOUSE

Winner of the RIBA South West & Wessex Award 2025, Two-Family House by Rundell Associates is set into the cliffs of Mawgan Porth on the Cornish coast. The house was conceived as a gathering place to be shared by two families, along with extended families and friends.

Materials were chosen for their visual interest and ability to withstand harsh conditions, whilst internally a natural palette of timber, stone and our smooth clay plaster has been employed to create a warm, textured, and inviting environment.

Designers
Rundell Associates
Millard & Flo

Finish
Smooth NUD-02, WHI-03

Location
Cornwall





PUBLIC

WALWORTH TOWN HALL

Feix&Merlin Architects and General Projects have completed the sensitive restoration of the Grade II listed Walworth Town Hall in London, severely damaged by fire in 2013.

Several spaces have intentional reminders of the building's history. Feix says this approach "lets the building talk about its history, rather than creating a pastiche of an era that's long gone". Our clay plaster features in several spaces, supporting the project's vision of respectful restoration and contemporary reinterpretation.

Architects
Feix&Merlin Architects

Finish
Smooth
Smooth Tonal - WHI-05,
GRY-05, Custom

Location
London



AUSTRALIA PAVILION

HOME is a spectacular earth and plaster experience of place. Presented by the three appointed Creative Directors of the Australia Pavilion at La Biennale di Venezia 2025, in collaboration with a broader group of First Nations practitioners, the exhibition highlights the power of collaborative design, encouraging architects to move beyond traditional Western hierarchies by relating with each other and sharing stories.

Architects

Dr Michael Mossman, Prof. Emily McDaniel & Jack Gillmer-Lilley

Finish

Rammed Earth

Location

Venice Biennale 2025



RED SEA AIRPORT

The Red Sea International Airport, designed by Fosters + Partners with interiors by Benoy, blends traditional and modern design through the use of rammed earth, a material deeply rooted in the region's vernacular and environmental values. This choice goes beyond aesthetics, establishing a strong connection to the desert landscape while promoting sustainability and reflecting a growing commitment to climate-responsive architecture.

Architects
Fosters + Partners x Benoy

Finish
Interior Rammed Earth
Demi Rustic
WHI-03, BRO-04, WHI-03,
TER-07

Location
Saudi Arabia





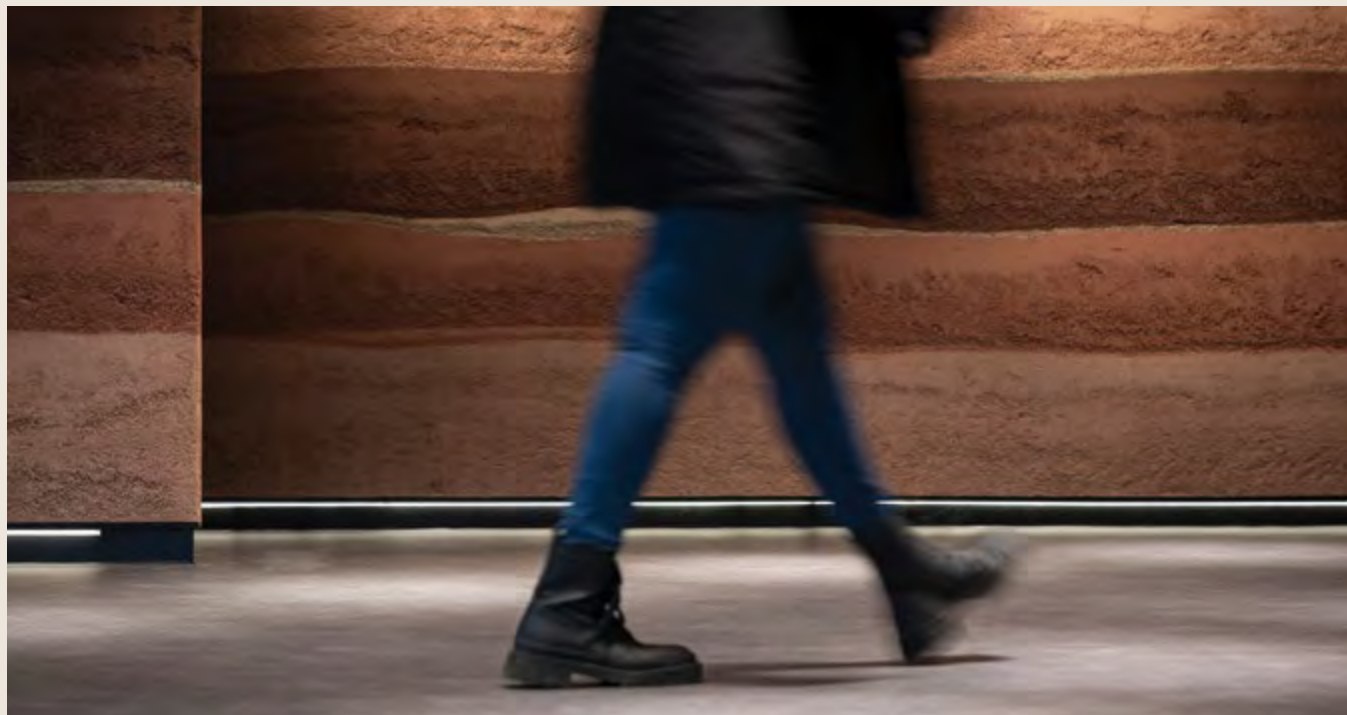
CBRE

CBRE's Scottish headquarters in Glasgow sets a benchmark for sustainable and healthy workplace design. Running through the office is a Clayworks Rammed Earth Finish wall, which runs through the entrance and traces the natural soil stratification beneath Glasgow. This striking architectural element celebrates the flagship office's location, and connects employees and visitors with the heritage of the site. With a depth of around 10mm, our Rammed Earth Finish also contributes to the performance of the building fabric, softening acoustics and thermal variations whilst offering moisture control and breathability.

Designers
Inhouse team

Finish
Rammed Earth

Location
Glasgow



KING FAHAD CULTURAL CENTER

The redesign of the King Fahad Cultural Centre in Riyadh revitalises its role as a hub for Saudi Arabia's cultural life, hosting exhibitions, seminars, and art events.

Drawing inspiration from Saudi culture and geography, our Clayworks Rammed Earth plaster walls reflect the Tuwaiq Mountains, while the tent-like fabric ceilings in the foyer echo traditional Saudi tents. The design pays homage to Najdi architectural traditions, reinterpreting iconic triangular motifs and methods with locally sourced materials to create a modern space rooted in heritage.

Architects

Giò Forma
Black Engineering

Finish

Interior and Exterior
Rammed Earth
Interior Smooth
WHI-08, BRO-06

Location

Saudi Arabia



Photography: Shoayb Khattab



CANVAS EVENTS PAVILION

The Canvas Events Pavilion, designed by T.ZED Architects, is a space for collaboration and interaction. Featuring a gallery, café/bar, and a native-planted garden with a performance space, the pavilion stands out for its sculptural form and expressive material palette.

Inspired by the surrounding landscape, the use of clay, timber, stone, and a corten steel staircase wrapping the exterior amplifies what founder Tarik Al Zaharna describes as "a refined and elegant rawness." The entire façade is finished with our Clayworks exterior plaster, allowing the pavilion to sit intentionally as a sculptural form within the landscape.

Architects

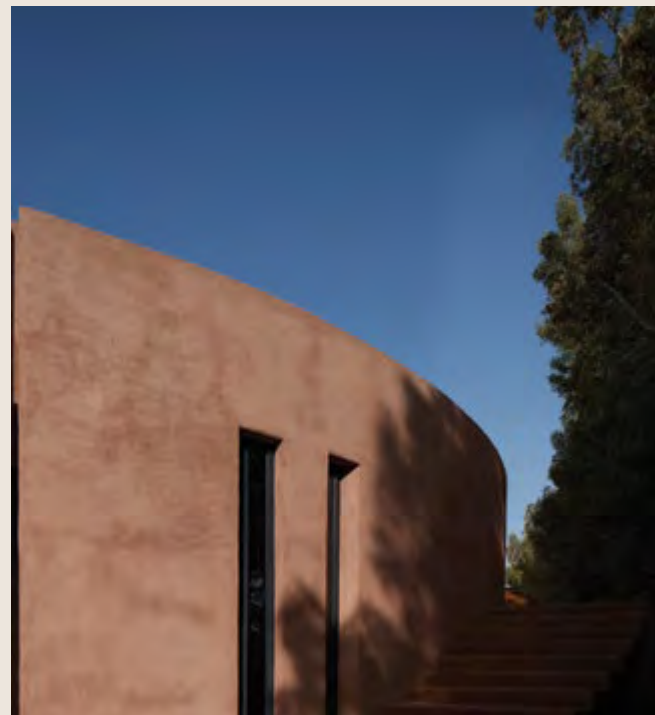
Tzed Architects

Finish

Smooth & Exterior custom colours

Location

UAE



BRYAN O'SULLIVAN STUDIO

The Bryan O'Sullivan Studio design aesthetic brings together multiple influences to create places where people feel comfortable and at ease, while maintaining a sense of place. For the launch of its own design collection, the studio created a showroom that reflects its commitment to timeless aesthetics and exceptional craftsmanship.

A rich backdrop of our Rustic Textured Ombre finish sets the stage for the collection, providing a striking yet warm atmosphere that perfectly complements the pieces on display.

Architects
Bryan O'Sullivan Studio

Finish
Rustic Textured Ombre
TER-03 to WHI-08

Location
London



Photography: Milo Hutchings



THE NEWT, ROMAN VILLA MUSEUM

Stonewood Design's RIBA award-winning Villa Ventorum and Museum offer a compelling window into Roman life in the Somerset countryside. Located within The Newt estate, the museum is positioned over the archaeological remains of the original Roman villa, first discovered in 1832. Completed in 2022, the low-carbon building features a glazed elevation that opens up views across the landscape and towards the reconstructed villa beyond. Inside, our natural clay plaster lines the walls, helping to regulate humidity and create a calm, breathable environment, ensuring that the original finds, including a Roman bath house, remain the centre of attention.

Architects
Stonewood Design

Finish
Rustic TER-05

Location
Somerset



Photography: Fotohaus

FINISHES

RAMMED EARTH	P158
CLAY	P166
TADELAKT	P176
LIME	P180
CUSTOM FINISHES	P184



INTERIOR / EXTERIOR

RAMMED EARTH

INTERIOR / EXTERIOR

RAMMED EARTH

Rammed earth is a proven building material. For more than 6,000 years and in virtually every region of the world, rammed earth has been used to build every type of structure, from house to monument to fortress – a surprising number of which still exist today.

However, traditional rammed earth comes with major limitations: incredibly thick walls reduce usable floor space in tight sites, while integrating and retrofitting windows, doors, and services (e.g. plumbing, electrical, air-conditioning) into rammed earth walls requires special detailing and careful planning.

Clayworks Rammed Earth finishes have been developed as an answer to the complex and technical challenges of building with monolithic mass. These 100% natural finishes can be applied as an entirely customisable 7-10mm thick wall build up, suitable for all wall and construction types, revolutionising the way this natural building technique can be applied in contemporary building, delivering a cost effective and sustainable option that also contributes to the performance of the building fabric, softening acoustics and thermal variations, and offering moisture control and breathability.



RAMMED EARTH

MODERN CONSTRUCTION SOLUTION

After decades of hands-on earth building and research trips around the world, Clayworks founders Adam Weismann and Katy Bryce developed our clay plasters and natural finishes - maintaining the essence and benefits of earth architecture in a contemporary, accessible way.

As with rammed earth construction, our finish is made from 100% natural clays, minerals, sands and coloured with natural earth pigments - a surface material able to achieve the authenticity and feel of monolithic rammed earth. Our

rammed earth finish also contributes to the performance of the building fabric: softening acoustics and thermal variations, and offering moisture control and breathability.

MONOLITHIC RAMMED EARTH



Depth: 800mm+
Weight: 1 tonne per m²
Cost: ££££

CLAYWORKS RAMMED EARTH



Depth: 8-10mm interior, 20-22mm exterior
Weight: 25kg per m²
Cost: ££ *much reduced cost compared to monolithic*



RAMMED EARTH

DESIGN LANGUAGE

As with all of our custom finishes, Clayworks Rammed Earth finishes are designed to explore unique textures, effects, and styles, delivering distinctive results meticulously crafted to align with the vision and specific requirements of each project.

There are countless possible variations of colour and texture, often in response to a desire by architects and designers to replicate local geological conditions, or to evoke cultural connections from specific vernacular architecture from around the world.

BANDING



Organic



Regular

ACCENT STRIPES



Accent Stripes



Without Accent Stripes

COLOUR RANGE



Simple



Complex

COLOUR GRADIENT



Defined Colour Bands



Colour Faded Bands



INTERIOR

CLAY

INTERIOR

CLAY MATERIALITY

Clayworks produce a unique range of clay plaster finishes grounded in wellbeing that elevate any interior atmosphere. Our interior finishes are available in our full range of colours and can be customised to suit any project typology or scale. Our Classic Finishes provide a balance of texture, tonal variation, depth, and thickness, delivering a refined yet consistent aesthetic.

Supplied as a premixed, pre-pigmented plaster in compostable 25kg bags, the product is ready to mix with water and apply using traditional plastering tools and skills. Suitable for walls and ceilings, including bathrooms, though not wet or shower areas - these natural, UV-resistant finishes are through-pigmented for long-lasting performance.

Clayworks finishes are designed with health, sustainability, and performance in mind. Made from 100% natural, compostable materials (with some colours containing minimal chemical pigments), they are free from formaldehydes, polymers, and oils, with extremely low VOCs and no off-gassing. Their breathable nature supports humidity regulation, toxin absorption, and noise reduction while delivering extremely low embodied carbon.

Clayworks wall finishes are backed by rigorous testing including Health Product Declarations, Environmental Product Declarations, VOC Emissions reports, and Air Comfort Gold certification, copies of which are available on request.



INTERIOR CLAY

SMOOTH

Clayworks Smooth Finish is a natural clay plaster, offering a refined, quietly textured surface with a soft sheen and subtle tonal variation. The natural qualities of clay bring warmth and tactility, with a quiet depth that enhances interior space. Calm and understated, the finish can serve as a minimalist backdrop or a defining surface in its own right.

This finish is breathable, non-toxic, and contributes to healthier indoor environments. Its ability to regulate humidity and soften acoustics complements its aesthetic qualities, making it both a practical and beautiful choice for interior surfaces.

Benefits

- 100% Natural
- Breathable
- Regulates humidity
- No off gassing
- Repairable

Environmental data

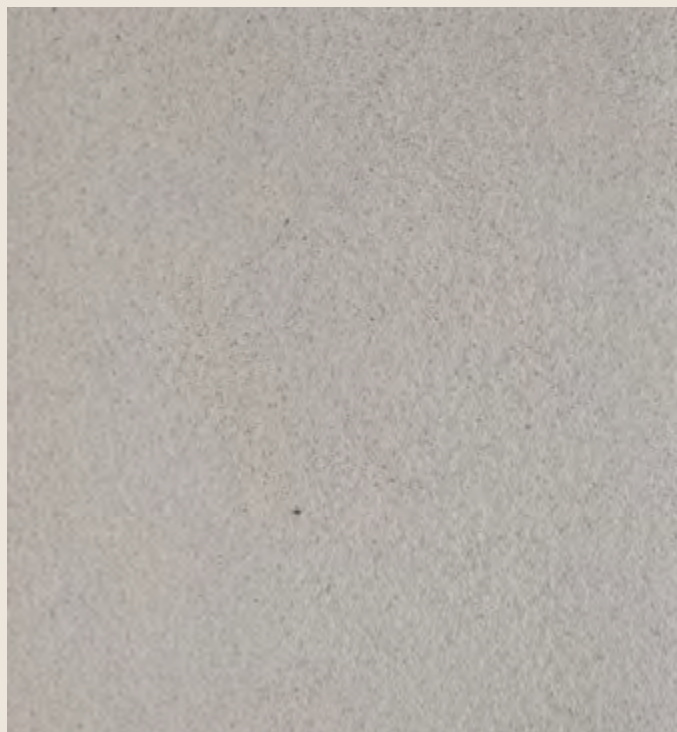
- EPD

Air Quality

- Trace VOC's
- Indoor Air Comfort Gold
- CDPH & Material Content Report
- LEED, BREEAM, WELL Attestation

Fire Ratings

- Euroclass A1
- ASTM E84



INTERIOR CLAY

DEMI-RUSTIC

Clayworks Demi-Rustic Finish reveals the richer, more pronounced texture of clay, bringing depth and character to interior surfaces. Its tactile quality creates a sense of weight and grounding, while natural tonal variation enhances the surface with warmth and presence. Expressive yet balanced, Demi-Rustic celebrates the raw beauty of clay in a finish that feels timeless and elemental.

Made from natural clay, this finish is breathable, non-toxic, and contributes to healthier indoor environments. Its ability to regulate humidity and soften acoustics complements its aesthetic qualities, ensuring that its visual richness is matched by comfort and wellbeing in the spaces it defines.

Benefits

- 100% Natural
- Breathable
- Regulates humidity
- No off gassing
- Repairable

Environmental data

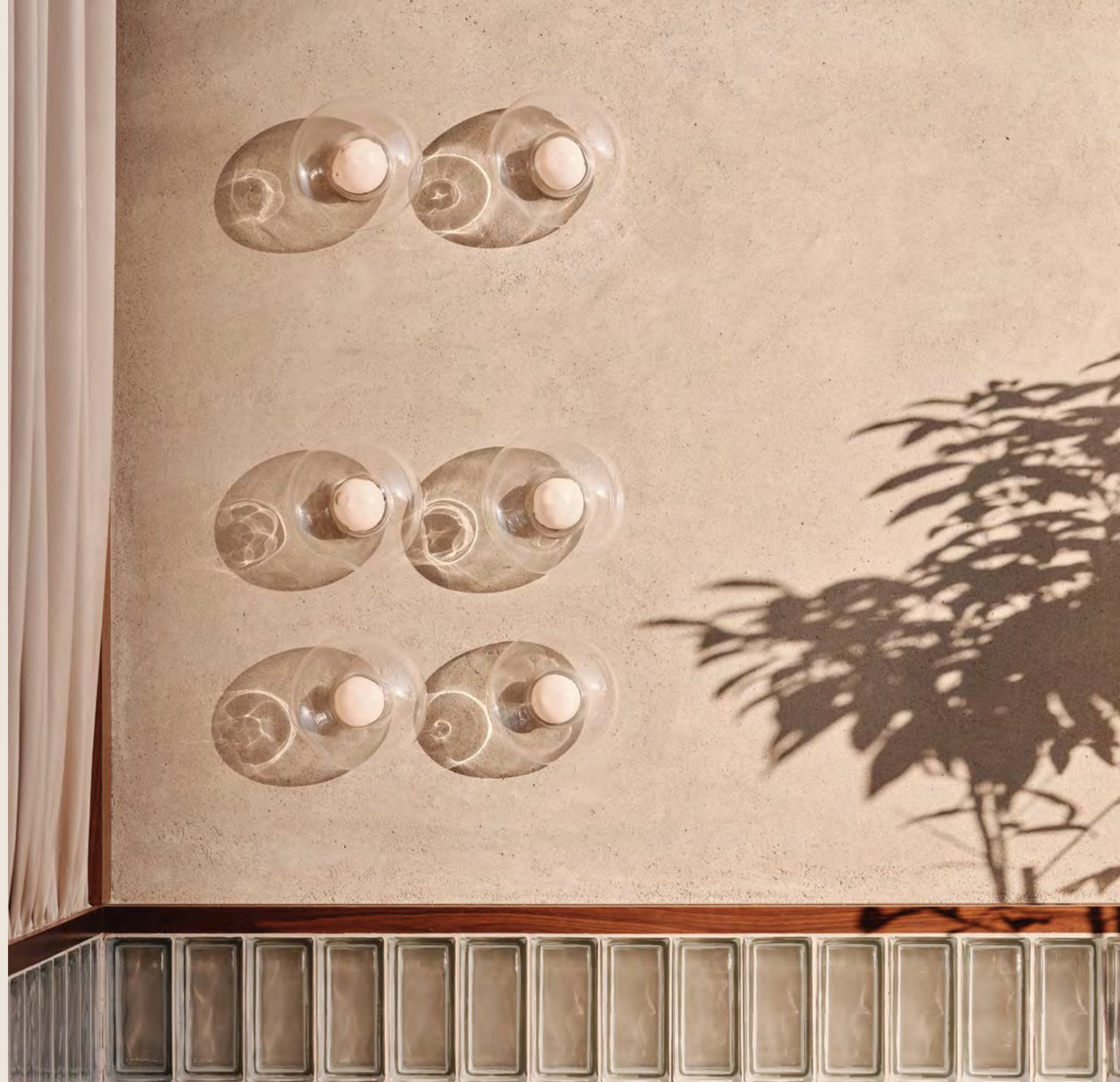
- EPD

Air Quality

- Trace VOC's
- Indoor Air Comfort Gold
- CDPH & Material Content Report
- LEED, BREEAM, WELL Attestation

Fire Ratings

- Euroclass A1
- ASTM E84



INTERIOR CLAY

RUSTIC

Clayworks Rustic Finish embraces the full richness of clay, with a robust, earthy quality that carries natural depth and variation. Its coarser texture brings raw materiality to interiors, offering an elemental and enduring character.

Made from natural clay, this finish is breathable, non-toxic, and contributes to healthier indoor environments. Its ability to regulate humidity and soften acoustics complements its visual strength, ensuring that its striking presence also enhances comfort and wellbeing within a space.

Benefits

- 100% Natural
- Breathable
- Regulates humidity
- No off gassing
- Repairable

Environmental data

- EPD

Air Quality

- Trace VOC's
- Indoor Air Comfort Gold
- CDPH & Material Content Report
- LEED, BREEAM, WELL Attestation

Fire Ratings

- Euroclass A1
- ASTM E84





INTERIOR

TADELAKT

INTERIOR

TADELAKT MATERIALITY

Clayworks Tadelakt Finish is defined by its polished depth and subtle sheen, created through a meticulous handcrafting process. The surface is smooth, rich, and light-reflective, carrying a quiet elegance that enhances interior spaces. Both functional and beautiful, Tadelakt embodies a timeless material tradition, refined to bring durability and character to modern design.

Made from natural lime, this finish is water-resistant, breathable, and non-toxic. Its unique surface is achieved through careful layering, compression, and polishing, before being treated with olive oil soap to create lasting protection. The result is a durable, low-impact alternative to tiles or synthetic coatings, offering a seamless finish that contributes to healthier, more sustainable interiors.

Benefits

- Water resistant;
When finished with polishing soap
- Purely mineral
- Breathable
- Neutral odour
- Resistant to dirt

Air Quality

- Trace VOC's
- Indoor Air Comfort Gold
- CDPH & Material Content Report
- LEED, BREEAM, WELL Attestation

Fire Ratings

- Euroclass A1
- ASTM E84





EXTERIOR

LIME

EXTERIOR

LIME MATERIALITY

Lime, which is derived from the raw materials limestone, chalk or coral (all rich in calcium carbonate), has proven itself throughout history and into the present day to be one of the most versatile, durable and adaptable binding materials.

At Clayworks, our exterior finishes build on this legacy through extensive experimentation, offering solutions where clay is less practical. Unlike cement-based materials, lime allows buildings to breathe, protecting stone, brick, and timber from damage by absorbing and releasing moisture. It is also more sustainable - fired at lower temperatures than cement, lime saves energy and even reabsorbs carbon dioxide through carbonation. Its compatibility with other natural materials such as wood, hemp, and straw further supports a circular, low-impact approach to building. Our lime finishes also promote healthier living environments. Non-toxic and free from pollutants found in many modern coatings, lime plasters regulate humidity, reduce condensation, and naturally inhibit mould growth thanks to their elevated pH.

Available in Demi-Rustic, Rustic or custom finishes, including rammed earth, our exterior finishes are designed for stand-alone applications or to seamlessly complement our clay plasters, and are available in our full range of colours.

Benefits

- Purely mineral
- Breathable
- Usable in a wide range of climates

Environmental data

- EPD

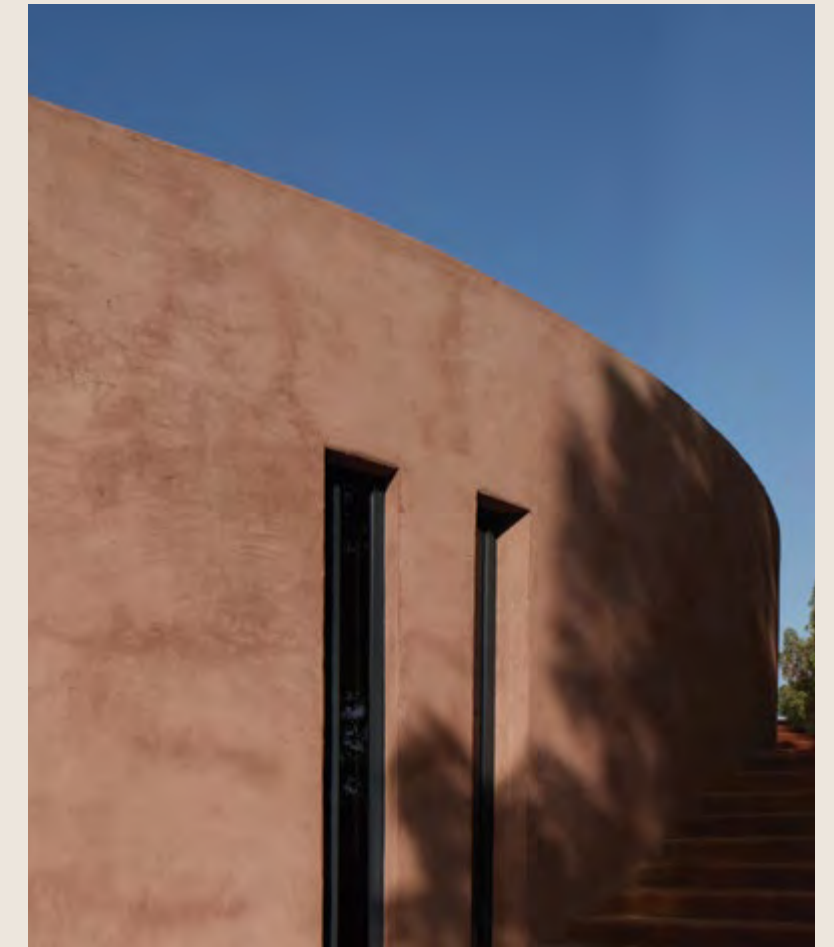
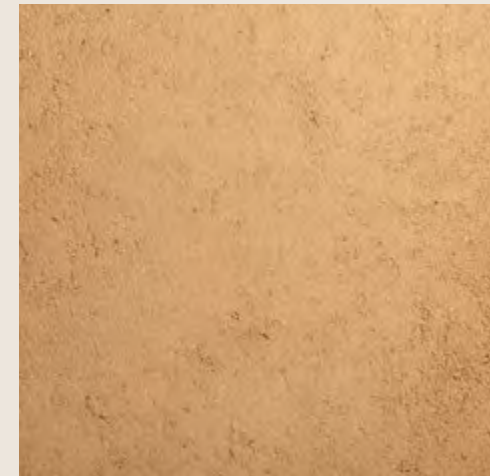
Fire Ratings

- Euroclass A1



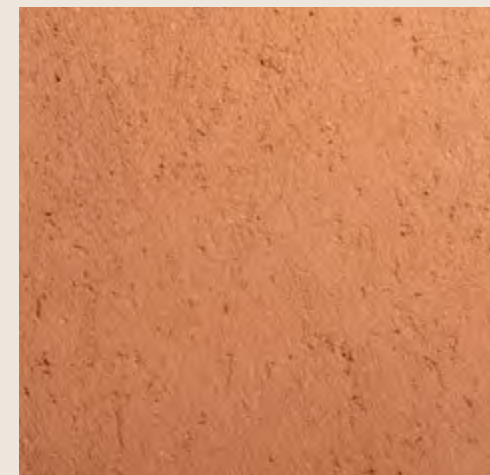
EXTERIOR FINISH DEMI-RUSTIC

Clayworks Exterior Demi-Rustic Finish offers a gently textured lime surface with natural depth and character. Its organic, tactile quality grounds buildings in their surroundings, creating a surface that is quietly expressive.



EXTERIOR FINISH RUSTIC

Clayworks Exterior Rustic Finish brings earthy depth and tactile richness to exterior surfaces. Its coarser texture brings a raw, organic materiality, helping to ground buildings in their environment.





INTERIOR / EXTERIOR

CUSTOM FINISHES

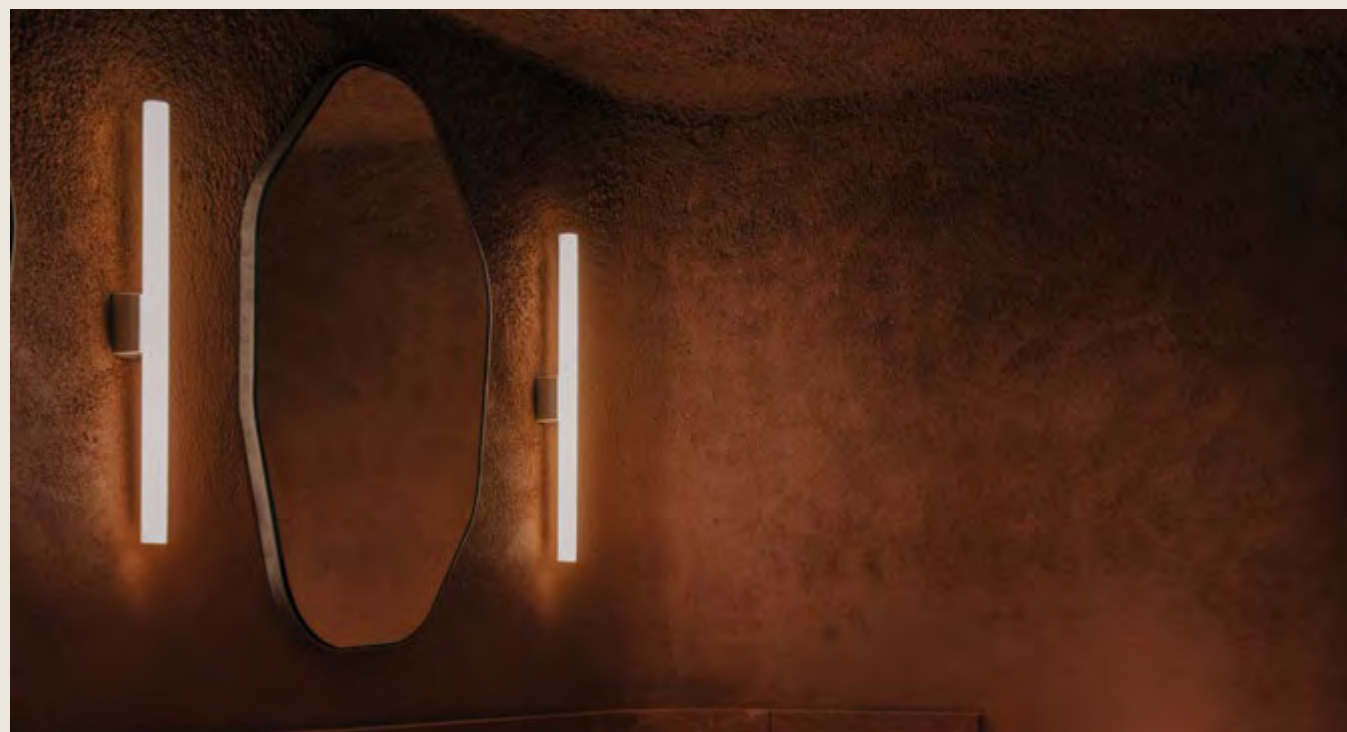
INTERIOR / EXTERIOR

CUSTOM FINISHES

Clayworks Custom Finishes are designed to explore unique textures, effects, and styles, delivering distinctive results meticulously crafted to align with the vision and specific requirements of each project.

Rooted in innovation and collaboration, custom finishes reflect a spirit of experimentation, pushing creative boundaries to deliver designs that enhance both the beauty and the performance of a space.

Every custom finish carries the same assurance of quality and the same sustainability credentials as our core collection. Perfect for projects inspired by place, vernacular, or history, they offer a way to create surfaces that feel authentic, timeless, and connected to their context.



CUSTOM FINISHES



HAND CARVED



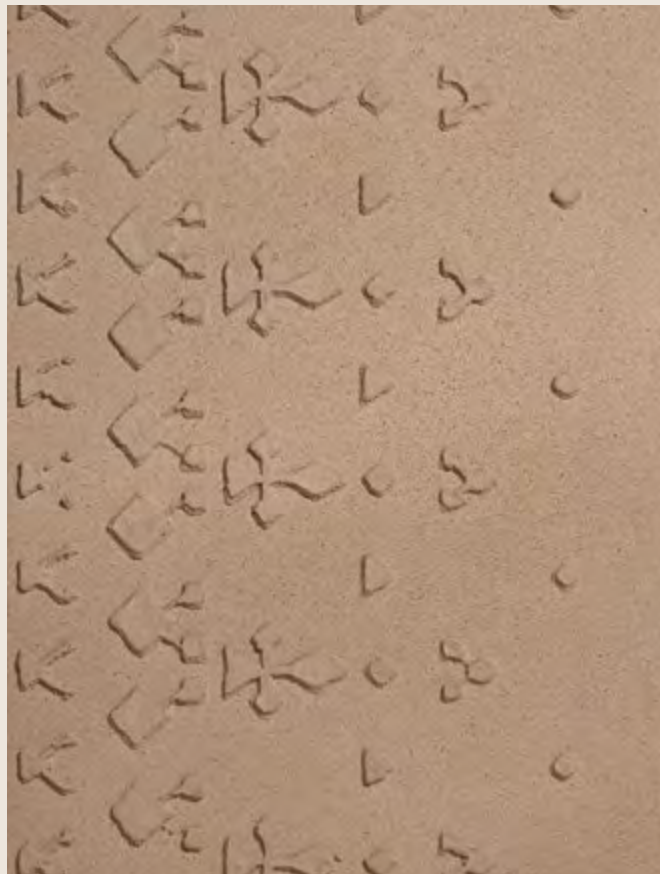
CUSTOM TEXTURE



HAND CARVED



HAND CARVED



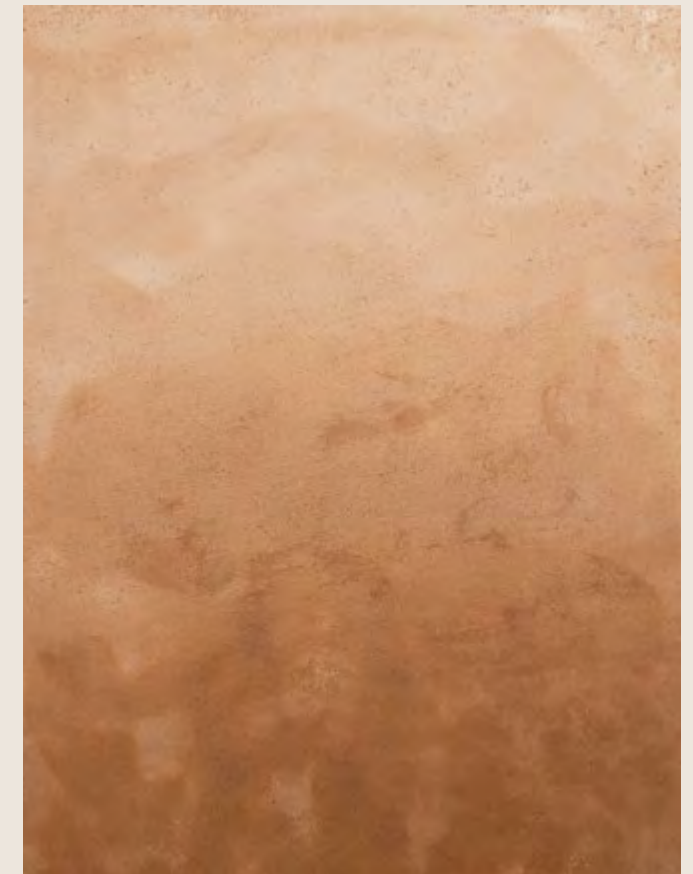
HAND CARVED



CUSTOM TEXTURE



CUSTOM



OMBRE COLOUR

CUSTOM FINISHES



CORDUROY



CORRUGATED



TWO TONE ANAGLYPTIC



ANAGLYPTIC



FLUTED



SLIM CORRUGATED

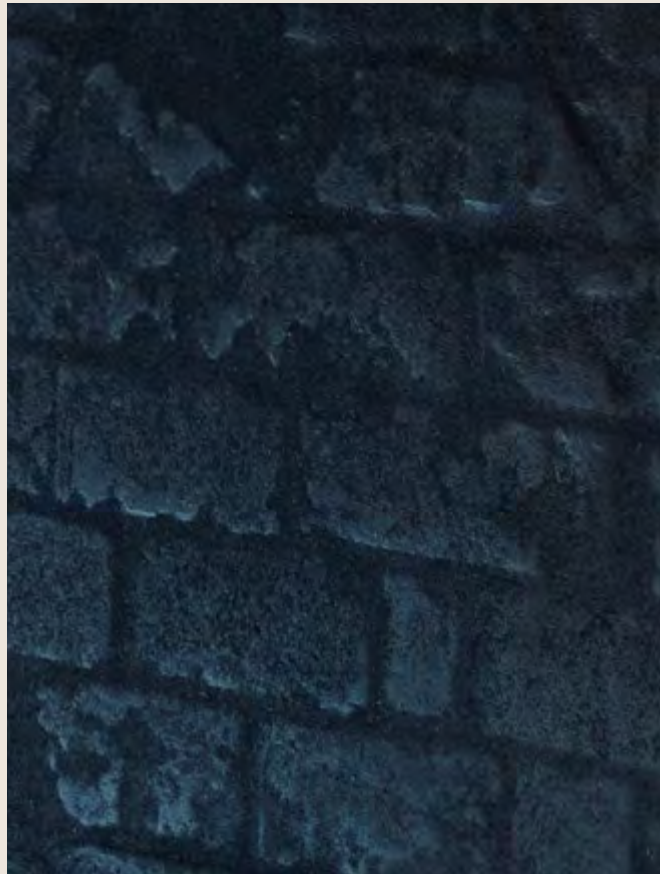


NAJDI



HAND CARVED

CUSTOM FINISHES



CLAY ON BRICK



MOONSCAPE



THATCHED



ARAKABE



OMBRE COLOUR



PITTED



TEXTURED OMBRE



BROOMED

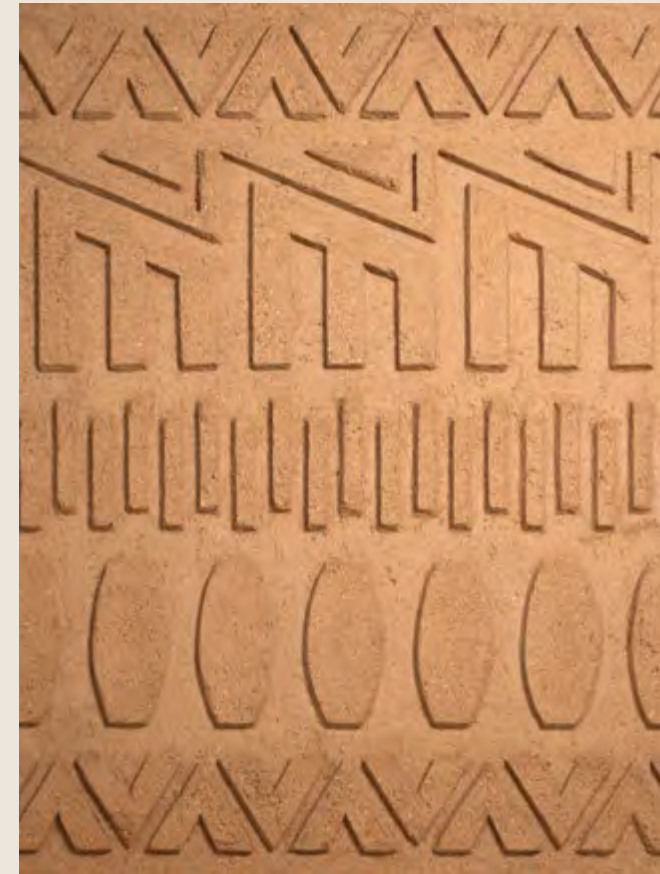
CUSTOM FINISHES



UNDULATING



TRAVERTINE



ANAGLYPTIC



PITTED



ROUGH WITH THE SMOOTH



EMBOSSSED



PRESSED LINEN



TRAVERTINE

SAMPLE STUDIO

Each sample is meticulously handcrafted by our small, experienced craft team in a working studio nestled in the depths of Cornwall. In this creative space, every detail is imbued with care, skill, and intention, showcasing the passion and craftsmanship that transform your vision into reality.

Our design-first philosophy and a dedicated sampling and design team work to craft bespoke finishes that bridge the worlds of architecture, art, and craft. We understand the importance of context in creating spaces, and we tailor each project with sensitivity and precision. Every Clayworks

finish reflects the individuality of our clients, delivered through craftsmanship, quality, and care at every stage of the process.





COLOURS

COLOUR SERVICE

At Clayworks, we consider colour to be more than just a visual element—it is a means of expression that influences the way we live, work, and experience our surroundings. Inspired by nature's diverse and ever-changing palette, we celebrate its rich spectrum of earthy shades, subtle neutrals, and bold hues, all with a focus on the beauty of imperfection and the natural ebb and flow of colour.

Our approach to colour is rooted in experimentation, blending the wisdom of traditional techniques with a sense

of creative freedom. We believe colour has the ability to shape our environment, elevate our mood, and foster a deeper connection with the spaces we inhabit.

You can choose from our curated range of 89 colours, or if you have a specific vision in mind, we invite you to enquire about our custom colour service.

COLOUR VARIATION ACROSS FINISHES



Smooth WHI-02

Demi-Rustic WHI-02

Rustic WHI-02

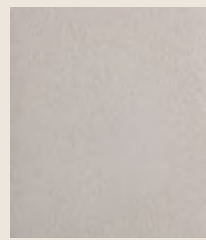


COLOUR CHART

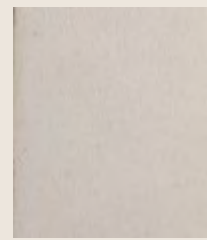
WHITE



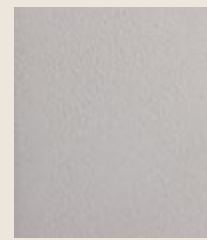
WHI-01



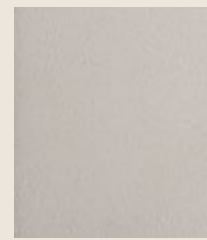
WHI-02



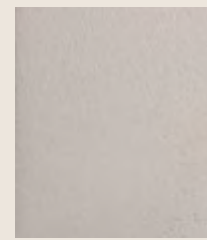
WHI-03



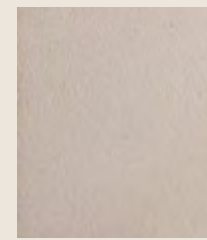
WHI-04



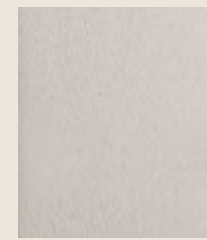
WHI-05



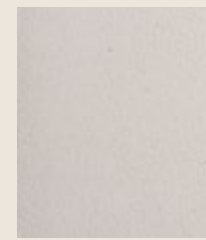
WHI-06



WHI-07

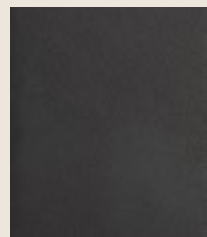


WHI-08



WHI-09

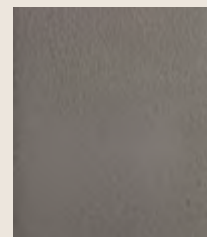
BLACK/GREY



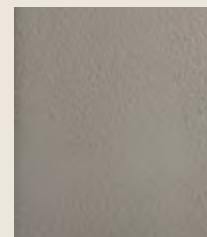
BLA-01



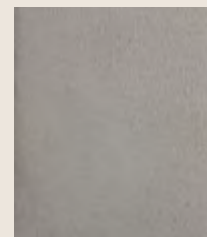
GRY-01



GRY-02



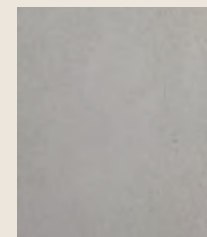
GRY-03



GRY-04



GRY-05

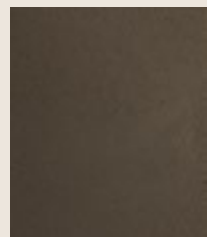


GRY-06

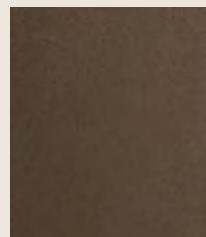


GRY-07

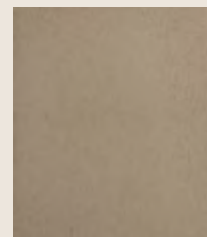
BROWN



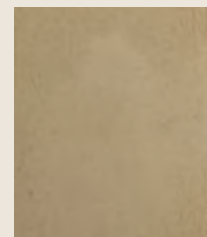
BRO-01



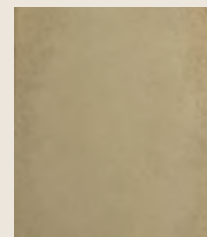
BRO-02



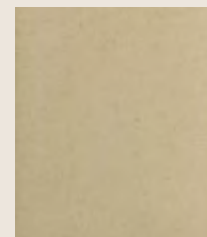
BRO-03



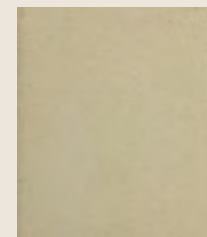
BRO-04



BRO-05

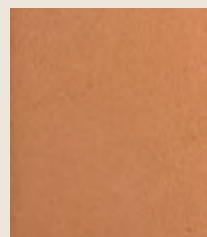


BRO-06

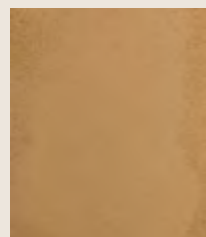


BRO-07

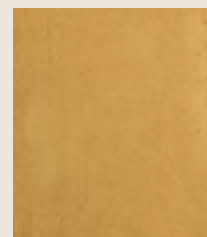
YELLOW



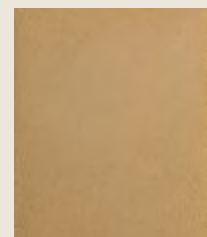
YEL-01



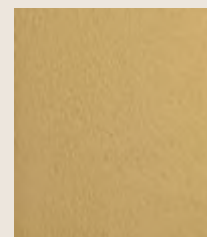
YEL-02



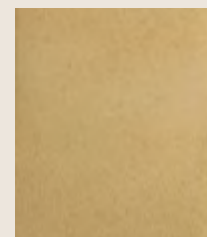
YEL-03



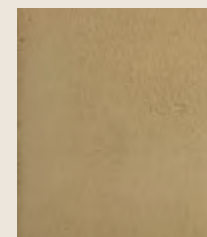
YEL-04



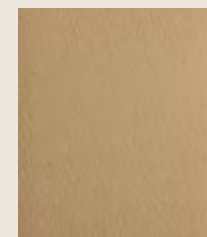
YEL-05



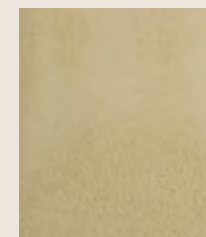
YEL-06



YEL-07



YEL-08

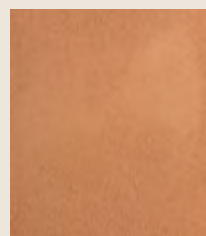


YEL-09

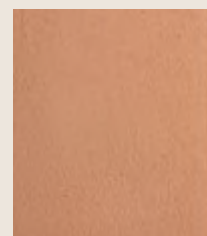
TERRACOTTA



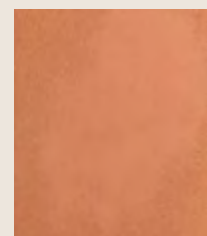
TER-01



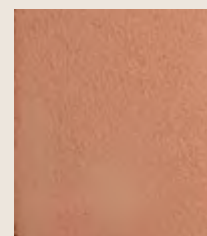
TER-02



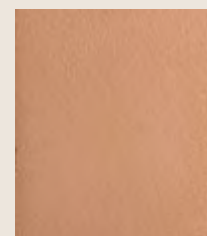
TER-03



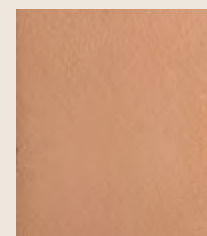
TER-04



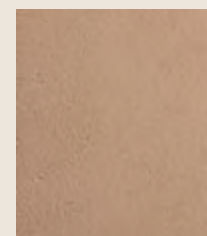
TER-05



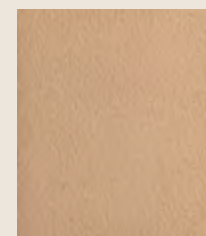
TER-06



TER-07



TER-08



TER-09

COLOUR CHART

PURPLE



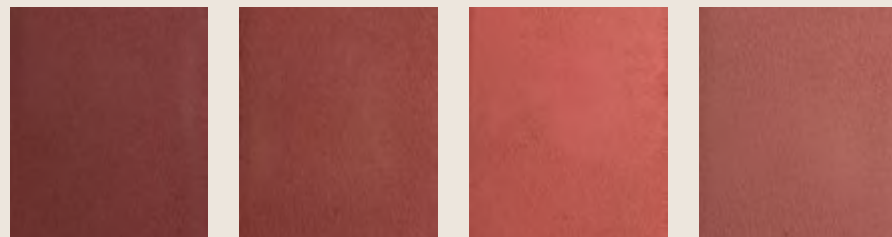
PUR-01 PUR-02 PUR-03 PUR-04 PUR-05 PUR-06

MAUVE



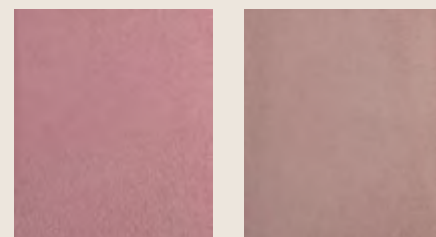
MAU-01 MAU-02 MAU-04 MAU-05 MAU-06

RED



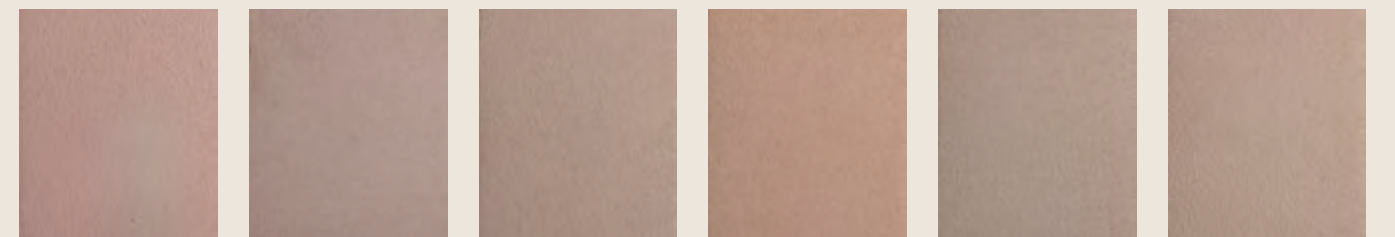
RED-01 RED-02 RED-03 RED-04

PINK



PIN-01 PIN-02

NUDE



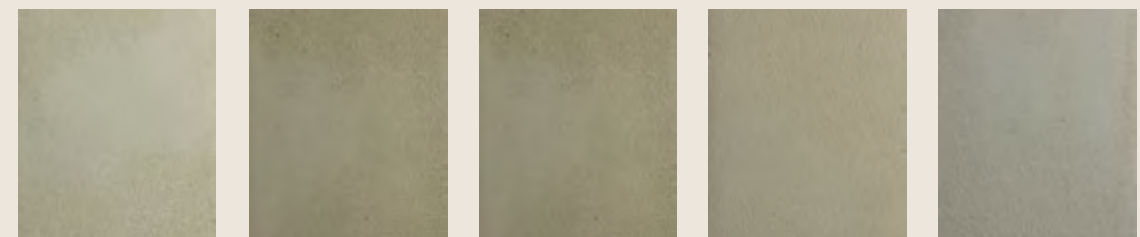
PIN-03 PIN-04 PIN-05 NUD-01 NUD-02 NUD-03

GREEN



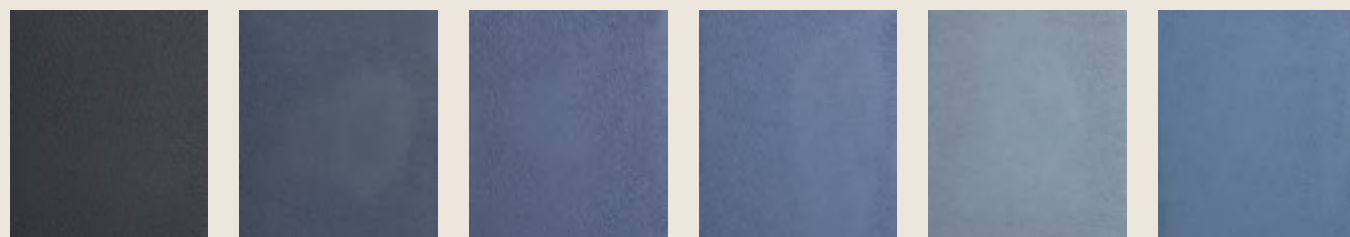
GRE-01 GRE-02 GRE-03 GRE-04 GRE-05 GRE-06

OLIVE

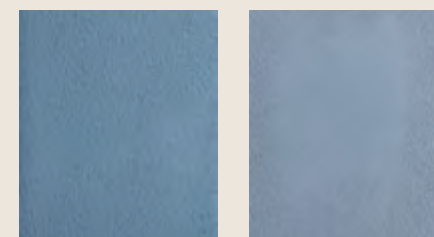


GRE-07 OLI-01 OLI-02 OLI-03 OLI-04

BLUE

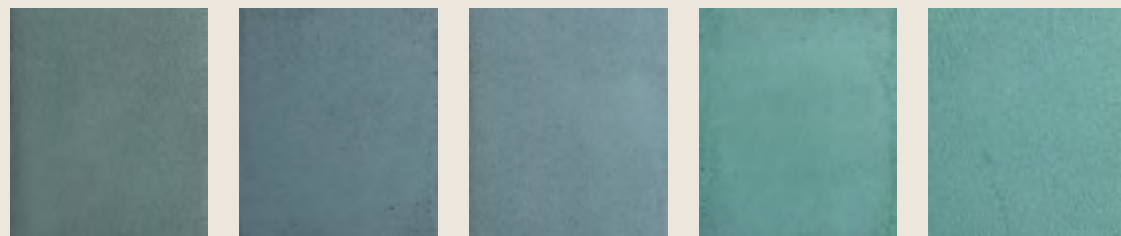


BLU-01 BLU-02 BLU-03 BLU-04 BLU-05 BLU-06



BLU-07 BLU-08

TURQUOISE



TUR-01 TUR-02 TUR-03 TUR-04 TUR-05



SPECIFYING

SPECIFYING CLAYWORKS

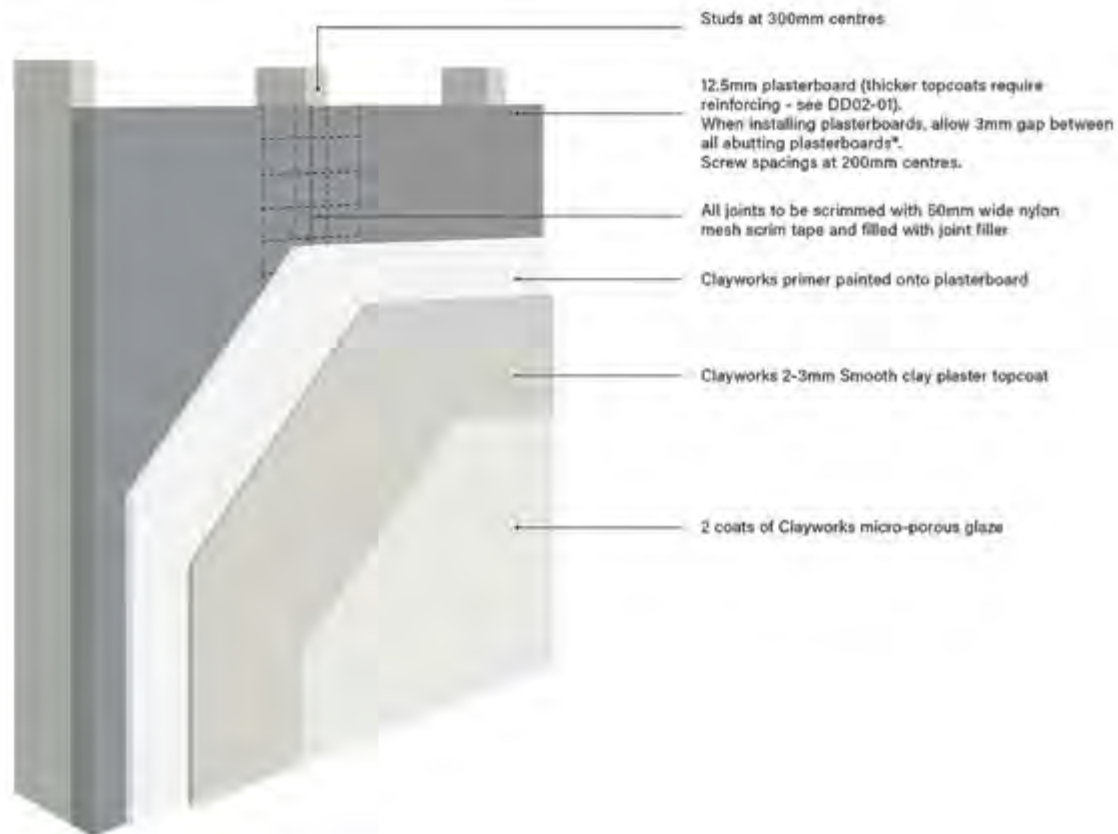
MATERIAL PERFORMANCE

Clayworks finishes are natural materials designed for modern construction, and every product has been rigorously tested to meet the highest standards. We provide Environmental Product Declarations (EPDs), fire performance data, and support for LEED, BREEAM and WELL certification pathways.

To support specification, we offer extensive design details, including wall build-up drawings for a range of applications. Whether used in hospitality, cultural or residential projects, our finishes combine beauty with proven performance for health, safety and sustainability.



DD02 Plasterboard substrate: for Smooth & Smooth Tonal interior clay plaster finishes



SPECIFYING CLAYWORKS

MATERIAL GUIDANCE

We work in partnership with architects and designers to help realise creative visions. From the initial concept to the final application, our team is on hand to share knowledge, guide specification, and ensure our materials perform as intended.

SAMPLING

Our sampling service allows architects and designers to explore ideas, finishes and colour, while also pushing the boundaries of what can be achieved with natural materials. From our Classic finishes to fully bespoke, each sample is carefully handcrafted by our small team of artisans in Cornwall. Colours can be matched to RAL, Pantone, or reference images, and we can develop new finishes that align with the design intent.

Our samples play a vital role in communicating vision to clients, offering a tangible way to ensure confidence in our products, while providing a clear guide on site to ensure the design is faithfully realised.

LOGISTICS

We have extensive experience delivering to sites worldwide, ensuring materials arrive where they are needed, on time and in perfect condition. From local projects to international developments, our logistics team provides support with precision and care.

APPLICATION

The integrity of a Clayworks finish depends on the quality of its application. We work with a trusted global network of skilled plasterers, trained to deliver both creative and technically demanding installations. For projects of any scale, we connect clients with the right team to ensure the design is faithfully executed and the results endure.



COMMITMENT TO THE EARTH

Clayworks was born from a love of nature and a belief in natural, sustainable building practices. Our work grew out of more than a decade of building and restoring with clay, and of learning from traditional earth practices around the world.

We believe that design should be holistic and respectful of both people and planet. With buildings among the largest contributors to greenhouse gas emissions, our mission is to create materials that lower carbon impact while offering healthier alternatives to conventional finishes.

From our workshop in Cornwall, we manufacture high-performance, affordable and easy-to-use materials with the lowest possible environmental footprint. Every surface we make is part of a broader commitment: to support a building culture that is regenerative, responsible and rooted in respect for nature.

OUR SUSTAINABILITY PRINCIPLES

- **HEALTHIER BUILDINGS** – creating finishes that are non-toxic, breathable and safe for people.
- **LOWER CARBON IMPACT** – reducing emissions through natural, minimally processed materials.
- **LEARNING FROM TRADITION** – drawing on centuries of vernacular practice to inform innovation.
- **RESPECT FOR NATURE** – designing and making in harmony with the environment.
- **CONTINUOUS IMPROVEMENT** – challenging ourselves to push the boundaries of natural materials and reduce impact further.



